



The Jerry Poch Train Collection

Session I

Prewar American Trains

February 22nd, 2025

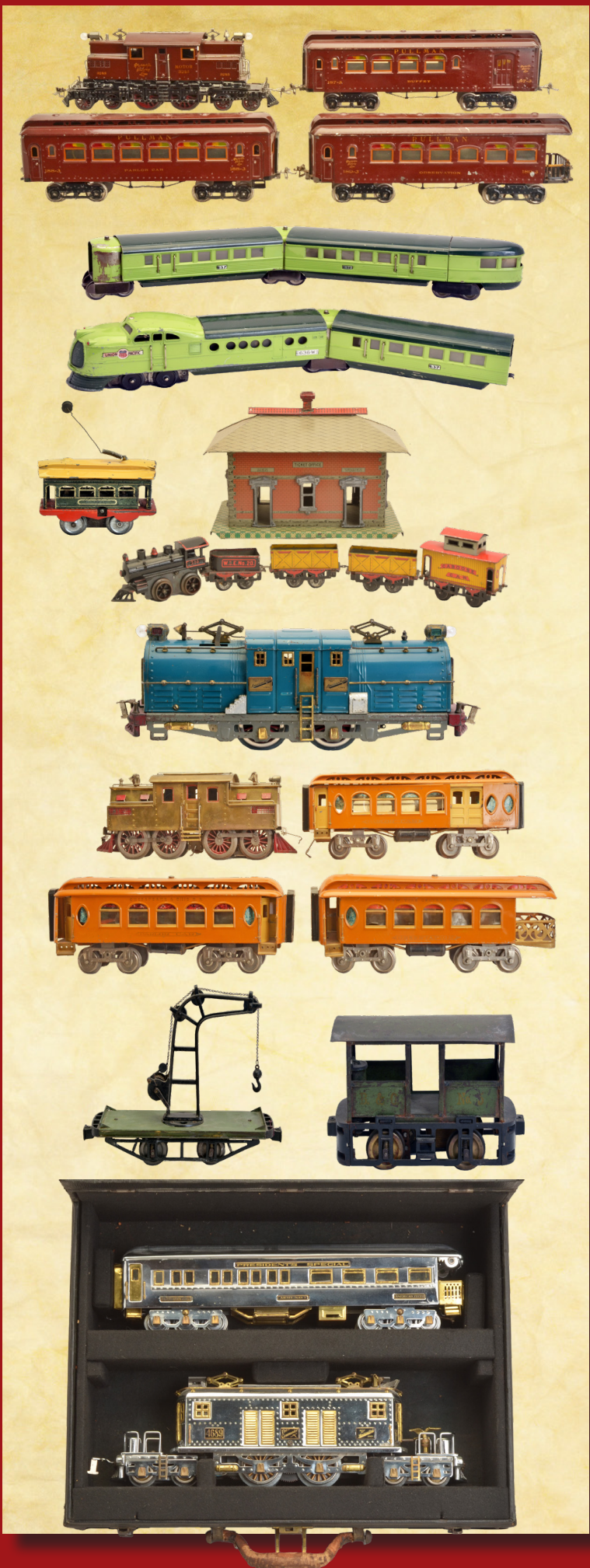
Stout Auctions of West Middlesex, PA is honored to present session one of the All Time Greatest Auction Series of quality, rare and diverse trains from the incredible Jerry Poch collection.



Please plan to attend this outstanding sale or join online at www.stoutauctions.com.

The sale will begin at 10AM ET.

Stout Auctions
2884 Mercer-West Middlesex Rd
West Middlesex, PA 16159
(724) 528-1500
katy@stoutauctions.com





2001

Lionel prewar O gauge four no. 58 cream lamp posts in OBs. The lamp posts are C7. The OBs have all flaps attached, except for one box which is missing two interior flaps.



2004

Lionel prewar O gauge 2814 scarce version boxcar with yellow body and doors, brown roof and door guides and nickel plates and journals in OB. The car has some minor nicks and is C7-8. The box is missing all flaps on one end.



2002

Lionel prewar O gauge two no. 58 peacock lamp posts in OBs, C8. The OBs are complete with all flaps.



2005

Lionel prewar O gauge peacock passenger set no. 296, circa 1928 in individual OBs and set box. The set contains the following; 253 electric loco with orange inserts, brass and nickel trim, two 607 Pullmans and a 608 observation car. The cars have orange inserts and nickel journals. Included with the set is an instruction booklet, two red flags and a packet. The set is C8. The individual OBs have most all flaps attached. The set box lid has one split corner and two repaired corners.



2003

Lionel prewar O gauge two no. 58 maroon lamp posts in early OBs. Included with each lamp is a wooden 14-volt lamp box, C8. The OBs are complete with all flaps.



2006

Lionel prewar O gauge 156 station platform, harder to find version with gray posts, circa 1942 in OB that has two original cardboard inserts, C8. The OB is clean with all flaps attached and label intact.



2007

Lionel prewar O gauge 150 scarce peacock electric 0-4-0 loco rubber-stamped New York Central Lines loco with red window trim and nickel trim, C7.



2010

Lionel prewar O gauge freight outfit no. 149W, circa 1939-40 in individual OBs and set box. The set contains the following; 225 black 2-6-2 steam loco with original cardboard insert, 2235W Lionel Lines tender with original cardboard insert, 2620 red floodlight car with original cardboard insert, 2654 orange Shell tank, 3659 automatic red dump car with a bag of coal, 2657 red caboose with ivory windows, RCS remote control track set and 167 whistle controller in OB with original cardboard insert. Also included is a 160 bin, UTC lockon, tube of lubricant, connecting ties in OB, instructions sheets and operating booklet. The loco and tender have a nice original matte patina. The freight cars have bright and clean paint. The set is C8. Individual OBs have most all flaps attached and show some wear. The set box is complete and label is fully intact.



2008

Lionel prewar O gauge promotional passenger set, circa 1942 containing the following; 229 gunmetal 2-4-2 steam loco, 2689W tender, 2630 Pullman and 2631 observation car. The light blue cars have silver roofs and inserts. The tender and cars have black journals. The loco is C8 and the tender is C7-8. The cars have never been run, C9. The cars are in OBs that have some detached flaps.



2011

Lionel prewar O gauge no. O71 telegraph posts set containing six no. O60 45N green telegraph posts with red cross arms, white insulators, black finials in an orange OB that has a cream die-cut and one cardboard original cardboard inserts. The set is C7-8. The OB is complete with label fully intact.



2009

Lionel prewar O gauge 137 illuminated Lioneltown station with dark cream base, white walls and chimneys, yellow window and door inserts, green window and door frames, red roof and nickel plates in OB that is split on one side. The station is C7-8. The box has all flaps attached and label is intact.



2012

Lionel prewar O gauge no. 50 wartime paper freight train, circa 1943 with sealed envelope containing wooden axles and advertising flyer in OB. The train has never been assembled, C9-10. The box has some split corners, shows some wear and does have nice color graphics.



2013

Lionel prewar O gauge 905B outfit master carton containing a 201 switcher and 2201B Lionel Lines slope-back bell ringing tender both in individual OBs, circa 1941. The switcher and tender are C8. The loco and tender boxes have reproduction cardboard inserts. The loco OB is missing one interior flap and the individual OBs have repairs. The master carton is complete with all flaps and label is fully intact with nice color graphics.



2016

Lionel prewar O gauge 916 felt composition 90-degree tunnel on corrugated paperboard base with three chalet-style houses, porcelain insulators, shrubs and trees in a worn OB. The tunnel measures 29 1/4 inches by 24 inches by 13 1/2 inches high. The colors are vibrant and clean. All of the shrubbery and trees are intact. The tunnel is C8. The box has split sides.



2014

Lionel prewar 435 power station with gray base, cream walls, terra cotta roof cornices, orange window inserts, pea green skylight, window and door frames, Mojave chimney base, red chimney and brass plates. The station is has a couple of minor nicks, otherwise is C7-8.



2017

Lionel prewar O gauge 256 orange rubber-stamped 0-4-4-0 electric loco, scarce version with a frame around LIONEL, first year production, circa 1924 with brass and nickel trim in a worn OB. The loco is C6. The OB is missing all flaps on one end.



2015

Lionel prewar O gauge chrome Flying Yankee streamliner passenger set no. 267W with gunmetal nose and tail, circa 1936 in individual OBs and set box. The set contains the following: 616W loco, two 617 coaches, 618 observation car, three vestibules, a 1936 instruction booklet, instruction card and individual box of connecting ties. The chrome on this set is very bright and shiny. The engine is C7-8 and the cars are C8. The engine box has two original cardboard inserts. The individual OBs have most flaps attached. The engine box is split down one side. The set box is complete and label is fully intact and has nice color graphics.



2018

Lionel prewar O gauge harder to find orange Illinois Central passenger cars; two 710 Pullmans and a 712 observation. The cars are lettered ILLINOIS CENTRAL above the windows, have wood grained doors, dark olive window inserts and plates and nickel journals. The cars are C7.



2019

Lionel prewar O gauge 119 straight tunnel in OB. The tunnel has a small paint nick on the top, otherwise is C7-8. The OB is complete with all flaps and label is intact.



2022

Lionel prewar O gauge dark green passenger set no. 70, circa 1915-16 containing the following; 700 rubber-stamped New York Central electric 0-4-0 loco with gold ventilators, nickel trim, red window trim and Lionel Manufacturing plate and two no. 600 Pullman. The four-wheel Pullmans have NEW YORK CENTRAL LINES above the windows. The set is C7.



2020

Unusual Lionel prewar O gauge blue and silver Schranz and Bieber Co. Department Store Special passenger set no. 8104, circa 1942 in individual boxes and set box. The set contains the following; 259E black 2-4-2 steam loco with nickel trim and brass L plates under the cab windows, 261T tender, two 609 Pullmans and a 611 observation. The loco and tender have a flat black patina with nickel trim. The cars have silver roofs, inserts and tender and cars have no journals. The loco and tender are C8. The passenger car roofs have some box rubs, otherwise cars are C8. The loco box has an original cardboard inserts. The individual OBs show wear, are missing some flaps and have some reproduction flaps. The set box is complete with all flaps and has some tape repair. Label is fully intact, however the box does show wear.



2023

Lionel prewar O gauge scarce 156 gray rubber-stamped New York Central Lines 4-4-4 electric loco with red windows. The roof has a factory touch up. The loco is C6.



2021

Lionel prewar O gauge no. 93 water tower with maroon base, terra cotta tower, pea green water tank and brass spout in OB, C8-9. The OB is complete with all flaps and is sealed on one end



2024

Lionel prewar O gauge unusual 819 set of freight cars in original master carton with three original cardboard inserts. The set contains the following; 653 apple green hopper, 654 silver Sunoco tank car, 655 cream boxcar with maroon roof and door guides and a 657 red caboose with cream window inserts. The cars have all nickel trim and journals. The cars are C7-8. The box is complete.



2025

Lionel prewar O gauge red Macys Special passenger set, circa 1931 in set box with five original cardboard inserts, four stamped 344C. The set contains the following; 450 red electric loco with brass Macy Special plates on either side of the engine, brass and nickel trim, two 610 Pullmans, a 612 observation car and two no. 27 12-volt lamps in individual OBs. The cars have ivory inserts, nickel journals and Macy Special lettering above the windows. The paint and trim on this set are very clean. The wheels on the loco are disintegrating. The loco has a couple of minor paint nicks on roof edge, otherwise set is C8. The set box is stamped 293T and the bottom is stamped 293B. There are Macy Railroad Terminal labels on the top of the box and on one side which are fully intact. The box lid has repaired corners. This is a very high quality matched original set and is in the best condition we have ever sold.



2028

Lionel prewar O gauge freight set no. 293, circa 1929-30 in individual OBs and set box which is marked TERRA COTTA. The set contains the following; 252 terra cotta 0-4-0 electric loco with cream striping along the base of the body, brass and nickel trim, 803 peacock hopper, 804 silver tank car, 805 pea green boxcar with orange roof and door guides and an 807 red caboose with peacock roof and window inserts. The four-wheel cars have brass trim and nickel journals. The set is C7-8. The individual OBs are missing some flaps. The set box has no split corners. The top label is mostly intact and the side label is fully intact.



2026

Lionel prewar O gauge no. 59 harder to find red lamp post with an interesting Macys tag. The tag reads Macys As Is Damaged or Shopworn Orig. Price and Pres. Price with 59 Cents crossed off and 49 cents written in. The lamp post is C7-8.



2029

Lionel prewar O gauge 123 tunnel with 90-degree curve, trees, shrubs and a house in OB. All of the landscaping is intact and the colors are bright and clean. The tunnel is C8. The OB has one original cardboard insert and is complete with all flaps, two which are detached. The box shows wear.



2027

Lionel prewar O gauge 226 black 2-6-4 steam loco with nickel trim and a very rare 2226T twelve-wheel die-cast Lionel Lines tender with nickel trim and journals. The loco and tender are C8.



2030

Lionel prewar O gauge semi-scale die-cast freight set no. 787W, circa 1940, in individual OBs with original cardboard inserts, cardboard coupler rings, cotton wraps and set box. This set contains the following; 763E black semi scale 4-6-4 Hudson steam loco, 2226WX Lionel Lines tender, 2954 Pennsylvania boxcar, 2955 black Shell tank, 2956 Baltimore and Ohio hopper, 2957 NYC caboose, RCS track, 167 whistle controller, box of connecting ties, instruction sheets and booklet. The tender and freight cars are the version with high-rise simulated knuckle couplers. The set is C8. The individual OBs have all flaps attached, some with repairs. The set box is complete and label is intact.



2031

Lionel prewar O gauge 93 water tank, version with a gray tower and tank, circa 1942 in OB. Except for a couple of minor nicks the water tank is C8. The OB is complete with all flaps.



2034

Lionel prewar O gauge 814R desirable white rubber-stamped refrigerator car, circa 1940 with brown roof, black ladder, brake wheels and journals in OB. The car is has never been run, C9-10. The box is complete with all flaps, except for one interior flap and has some staining on one end.



2032

Lionel prewar O gauge Lionel Jr. streamliner passenger set no. 6204, circa 1936-37 in individual OBs and set box. The set contains the following; 1700 power car with a brass L on the front of the loco, 1701 coach, 1702 observation car and a 1028 25-watts transformer. The set is silver and red and is the version with smooth sides. The set has nickel trim and journals. The set is C7-8. The individual OBs are complete with all flaps. The set box is complete and label is intact.



2035

Lionel prewar O gauge freight set no. 239, circa 1939 in individual OBs except for the loco and tender and set box. The set contains the following; 227 black steam switcher, 2227T Pennsylvania slope-back tender, 2654 orange Shell tank car, 2655 cream boxcar with maroon roof and door guides and a 2657 red caboose with cream windows. The set has nickel trim and black journals. The loco and tender are C8 and the cars are C7-8. The individual OBs have most all flaps attached. The set box is complete with label intact.



2033

Lionel prewar O gauge 813 scarce Tuscan rubber-stamped cattle car with high rise simulated knuckle couplers, circa 1940 in OB. The car has never been run, C9-10. The OB is complete with all flaps.



2036

Lionel prewar two no. 59 dark green lamp posts in OBs, C7-8. The OBs are complete with all flaps and show wear.



2037

Lionel prewar O gauge scarce and unusual shade of apple green four-wheel passenger cars with black frames and maroon inserts including; two 629 Pullmans and 630 observation car. All three cars have Pullman plates below the windows. The cars are C5.



2040

Lionel prewar O gauge two-tone Blue Comet Hudson passenger set no. 768W in individual OBs, circa 1938-39. The set contains the following; 763E semi-scale gunmetal Hudson steam loco with original cotton wrap, 2263W Vanderbilt whistle tender with nickel trim and journals, 2615 baggage, two 2613 Pullmans and 2614 observation car. The two-tone blue cars have white inserts, automatic couplers and nickel journals. The Hudson loco has the late die-cast body, circa 1938-1939. The set is C8. The boxes are complete with most all flaps.



2038

Lionel prewar O gauge dark green passenger set no. 92, circa 1925-26 in set box. The set contains the following; 152 rubber-stamped New York Central Lines 0-4-0 electric loco with red window trims and nickel journals, 629 Pullman, a 630 observation car, eight curve track sections and an instruction booklet. The four-wheel cars have maroon inserts and no journals. The set is C7-8. The set box has no split corners and has two labels. The top label is intact and the side label is partially intact.



2041

Lionel prewar No. 1 Bild-A-Motor with red base and original instruction sheet in OB with original white label that has red lettering and image. The Bild-A-Motor is C8. The box has no split corners and label is intact.



2039

Lionel prewar O gauge 313 operating Bascule bridge, version with gray bridge, circa 1942 in OB that has all original cardboard inserts. Included with the bridge is the frame, a packet with track pins and special track, screws, wires and 96C controller, C7-8. The OB is complete with all flaps and is square and clean.



2042

Lionel prewar O gauge harder to find dark green New York Central Lines passenger set no. 266, circa 1924-25. The set contains the following; 254 electric 0-4-0 loco with nickel strap headlights, brass and nickel trim, two 610 Pullmans and a 612 observation car. The cars have wood grain doors, NEW YORK CENTRAL LINES above the windows and no journals. The set is C6.



2043

Lionel prewar O gauge very scarce 262E Macys loco and tender master carton with Macys stamped on both ends. The outfit consists of a 262 black 2-4-2 steam loco with unusual red striping, brass and copper trim and a 262T black Lionel Lines tender with brass trim and copper journals in individual OBs. The loco and tender are C8. The master carton has all flaps attached and is sealed on one end. The individual loco OB has an original cardboard insert and is missing all flaps on one end. The tender box has most flaps attached. Both loco and tender have original paper wrap.



2044

Lionel prewar O gauge No. 76 warning bell and shackle with die-cast cross buck and 153C contactor in OB. The OB is complete with all flaps and label is on open end and is partially intact. Also included is a 45N automatic gateman with a die-cast cross buck, nickel finial and a 153C contactor in OB. The OB is complete with all flaps and label is on open end and is partially intact. The accessories are C7-8.



2045

Lionel prewar O gauge freight set no. 277W with all nickel trim and journals, circa 1936-37 in individual OBs and set box. The set contains the following; 263E gunmetal loco with nickel trim, 263W tender with nickel trim and journals, 812 45N green gondola with six wooden barrels and 812T tool set consisting of three nickel plated tools in individual OB that has original wrap, 810 derrick car with cream cab, red roof, 45N green boom and three black knobs, 820 floodlight car with 45N green base, 817 red caboose, 67 whistle controller in individual OB and a 95 rheostat. The freight cars have all nickel trim and journals. The set is C7. The loco box and crane box have original cardboard inserts. The individual OBs are damaged. The set box has all tape repaired flaps and corners. The label is partially intact.



2046

Lionel prewar O gauge no. 152 unusual peacock rubber-stamped New York Central Lines electric loco with red window trim, brass and nickel trim. The loco is C6-7.



2047

Lionel prewar O gauge brown passenger set no. 160, circa 1917-19 in set box with original cardboard inserts. The set contains the following; 150 New York Central electric loco with dark olive window trim, nickel trim and The Lionel Corporation plate, two four-wheel no. 600 Pullmans, 88 rheostat and instruction sheet. The Pullmans have NEW YORK CENTRAL LINES above the windows. The set is C7. The set box lid has all four corners split. The two labels are mostly intact.



2048

Lionel prewar O gauge scarce no. 213 outfit original box that contains a 203 gray Armored car with eight curve track sections, circa 1917-18. The car is C6. The OB is damaged. The label is mostly intact and number is clearly shown.



2049

Lionel prewar O gauge two no. 702 gray supply cars from set no. 215, circa 1920-21. The cars are C5.



2052

Lionel prewar O gauge unusual freight set no. 8062, circa 1942-42 in individual OBs and set box. The set contains the following; 258 black steam loco with black domes, 2689TX Lionel Lines tender with box coupler without hook, 654 gray Sunoco tank with black dome and trim, 655 yellow boxcar with brown roof and door guides, a 657 red caboose with ivory windows and Tuscan roof, 1019 remote control track section and a 1041 60-watts transformer. The freight cars are rubber-stamped and have black journals. Except for a couple of minor nicks the set is C8. The loco and tender boxes are missing all flaps. The car boxes are missing some flaps. The set box is complete with all flaps and label is intact but faded.



2050

Lionel prewar O gauge desirable and scarce two-tone green City of Denver streamlined passenger set no. 6531W, circa 1936-37. This set was thought to be a West Coast department store special set. The set contains a 636W power car, 637 coach, 638 observation car and three vestibules. Also included is an extra 637 coach. The set and car are C6-7.



2053

Lionel prewar O gauge no. 706 dark green 0-4-0 electric loco rubber-stamped with unusual C.P.R. lettering both sides, gold painted ventilators, nickel trim and red window trim, C7.



2051

Lionel prewar two no. 59 olive green lamp posts in OBs, C8. One box is missing an end flap.



2054

Lionel prewar O gauge no. 59 harder to find red lamp post in OB, C8. The OB is complete with all flaps.



2055

Lionel prewar O gauge Red Comet passenger set no. 291W, circa 1936 in individual OBs and set box. The set contains the following; 264E red Commodore Vanderbilt steam loco with nickel trim and brass on boiler front, 265W Lionel Lines tender with nickel trim and journals, two 603 Pullmans, 604 observation, 66 whistle controller, with instruction sheet, box of connecting ties, inspection card and instruction booklet. The red passenger cars have white inserts, red underbellies and nickel journals. The loco cab has some paint nicks, otherwise the rest of the loco and tender is C7-8 and the cars are C8. The loco box has an original cardboard insert. The individual OBs have most all flaps attached, some with repairs. The set box is opened from the bottom of the box and is complete with all flaps. The label is intact.



2058

Lionel prewar O gauge no. 703 dark green rubber-stamped New York Central Lines 4-4-4 electric loco with red window trim and nickel trim, circa 1915-16, C7.



2056

Lionel prewar O gauge 225E desirable and harder to find gunmetal steam loco with a 2235W die-cast Lionel Lines tender with nickel trim and black journals. The loco and tender are C8.



2059

Lionel prewar O gauge two 069 warning signals, one maroon with red lettered brass sign and one olive green with black lettered brass sign. The signs are C8. Also included is one worn OB.



2057

Lionel prewar O gauge lithographed freight set no. 1087W, circa 1938 in damaged individual boxes and set box. The set contains the following; 1664E gunmetal steam loco, 1689T Lionel Lines tender with nickel trim and journals, 1679 yellow Baby Ruth boxcar with peacock roof, orange doors and door guides, 1680 silver Sunoco tank car and 1682 red caboos with cream trim. Except for a couple of minor nicks, the set is C8. The individual OBs are missing flaps but most are included. The set box has one top flap partially missing. The label is fully intact.



2060

Lionel prewar O gauge Macys Special orange passenger set no. 267, circa 1929-30 in individual OBs and set box. The set contained the following; 4 Bild-A-Loco electric loco with black lettered brass plates, brass and nickel trim and weights, two 605 Pullmans, a 606 observation car with a special Macys Special drumhead on the observation deck, no. 1 Bild-A-Motor, instruction sheets, postcard and booklet. The cars have cream inserts, apple green doors and nickel journals. The set is C8. All the individual boxes and the set box are correctly stamped YELLOW. The individual OBs have most all flaps attached. The set lid has one split corner. The side label is intact and the top label is partially intact.



2061

Lionel prewar O gauge two no. 56 lamp posts, one gray and one Mojave both in OBs, C8. The OBs are complete with all flaps.



2064

Lionel prewar 435 power station, rare version with two brass Edison Service plates. The station has a gray base, mustard walls, terra cotta roof cornices, wood grain doors, dark green window and door frames, pea green skylight and window inserts, Mojave Chimney base, and red chimney. The station is C6-7.



2062

Lionel prewar O gauge freight set no. 275W, circa 1936 in individual OBs and set box. The box contained the following; 255E gunmetal steam loco with all nickel trim, 263W tender with a brass L plates, nickel trim and journals, 812 45N green gondola with six wooden barrels, 814 yellow boxcar with brown roof and door guides, 817 red cabooses with nickel windows, 66 controller, tube of lubricant, box of connecting ties in individual OB, Model Engineering mail in offer sheet, original instruction sheets and instruction booklet. The freight cars have nickel trim and journals. Except for some minor nicks the set is C8. The loco box has an original cardboard insert. The individual loco and tender OBs are complete with all flaps. The car boxes have most flaps attached. The set box is complete with all flaps. Label is fully intact with nice color graphics.



2065

Lionel prewar O gauge unusual olive green passenger set Special 1, circa 1930 in individual OBs and set box. The set contains the following; 252 electric 0-4-0 loco with red striping along the cabs bottom edge, brass and nickel trim, two 529 Pullmans, 530 observation car, 068 pea green railroad crossing sign with a white cross buck and finial and instruction sheet. The four wheel cars have orange inserts. One of the Pullmans has copper journals and the other Pullman and observation car have nickel journals. The loco has been rewheeled. The set is C8. The individual OBs are all stamped L. OLIVE and have most all flaps attached. The set box is stamped SPEC. 1. The box has no split corners and both labels are intact. This is a very unusual set in high end condition.



2063

Lionel prewar O gauge 231 black steam semi-scale 0-6-0 PRR B-6 switcher with a 2231B Pennsylvania slope-back tender with nickel journals, circa 1939 in individual OBs. This loco/tender combination came in outfit no. 901B The loco and tender are C8. The boxes are complete with all flaps.



2066

Lionel prewar O gauge 812T tool set with three nickel plated tools with original paper wrap in OB, C9-10. The OB is clean with all flaps attached.



2067

Lionel prewar O gauge freight set no. 187WX Sears Roebuck no. 59-79F, circa 1940. This set contains the following; 238 black Pennsylvania 4-4-2 steam loco, 2225W Lionel Lines tender, 2653 black hopper, 2654 orange Shell tank, 2655 cream boxcar with a Tuscan roof and a 2657 red cabooses with ivory windows. The cars are all in OBs. The tender and cars have black journals and nickel trim. The set does not have much run time. Set is C8. The OBs have most flaps attached, except for the hopper box which has no flaps.



2070

Lionel prewar O gauge aluminum streamliner Union Pacific passenger set no. 751E, circa 1935-36 in individual OBs and set box. The set contains the following; 752E power unit, 753 coach, 754 observation, two 752T vestibules, 95 controlling rheostat, connecting ties, instruction sheets and pamphlet. The die-cast underbellies are solid and straight. The stampings on all pieces are strong. The aluminum is very bright and clean. The set is C8. The individual OBs are all sealed on one end and have all flaps attached on the other end. The boxes are square and clean with strong stampings. The set box is stamped ALUMINUM above the label. The label is fully intact with bright and clean color graphics. This is one of the cleanest examples of the aluminum set that we have seen.



2068

Lionel prewar O gauge 700E NYC scale Hudson 4-6-4 locomotive with serial number 010141, circa 1937 and 700W New York Central scale tender. The die-casting on the loco and tender are solid and intact. The loco and tender are C8.



2071

Lionel prewar O gauge 154 unusual very light olive green 0-4-0 rubber-stamped New York Central Lines electric loco with red window trim, nickel strap headlight and nickel trim, C5.



2069

Lionel prewar O gauge two no. 53 ivory lamp posts, C7-8.



2072

Lionel prewar O gauge freight set no. 229, circa 1930 in individual OBs and set box. The set contains the following; 257 black steam loco with brass and copper trim and orange striping, 257T four-wheel Lionel Lines tender with brass and copper trim, orange striping and copper journals, 831 dark green log car with wood load, brass brake wheels and nickel stakes, 807 red cabooses with peacock windows and roof and brass trim, 068 pea green railroad crossing sign with brass cross buck and finial, 88 rheostat, connecting ties, no. 24 wooden lamp box, eight curve track sections and two straight track sections. The four-wheel cars have copper journals. The set is C8. The loco box has an original cardboard insert. The individual OBs have most flaps attached. The set box has no split corners with both labels intact.



2073

Lionel prewar O gauge outfit number 907B master carton, circa 1940-42 consisting of a 233 black PRR B-6 0-6-0 steam switcher with a 2223B Pennsylvania bell ringing slope-back tender and instruction sheet both in individual OBs. The loco OB has an original cardboard insert. Both the loco and tender have original cotton wrap, C8. The boxes are complete with all flaps and labels are all intact on the boxes



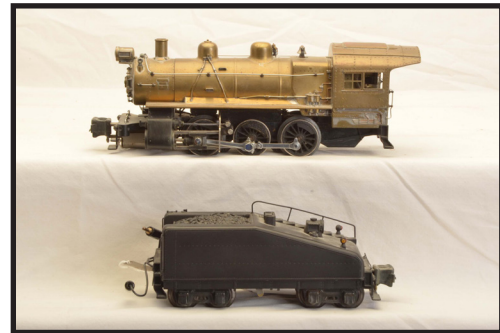
2076

Lionel prewar O gauge two no. 35 gray boulevard lamp posts, circa 1942 in OBs. Also included are two no. 35 silver boulevard lamp posts in OBs. The lamp posts are C8. The boxes have some repairs.



2074

Lionel prewar O gauge no. 57 orange lamp post with with harder to find Broadway, 21st Street, Fifth Avenue and 42nd Street signs and an orange lamp post with Broadway and Main signs, C7-8.



2077

Lionel prewar O gauge brass prototype 701 PRR B-6 scale 0-6-0 switcher with a slope-back tender. This switcher was found in a Montreal hobby shop in the late 70s by Gary Baloun. When the loco was initial found it was painted black over gold paint. Joshua Cowen kept this loco behind his office desk for many years. There is a photo of Joshua and Lawrence Cowen at his desk with the loco showing on a shelf behind him. The photo can be found in the new Project Roar Publishing book Lights, Camera, Lionel Trains! by Roger Carp. Additional pictures for this item were provided by Mark Stephens.



2075

Lionel prewar O gauge scarce and desirable Macys Special no. 1 maroon passenger set, circa 1931 in individual OBs and set. The set contains the following; 252 electric loco with cream edge striping, brass and nickel trim, two 607 Pullman cars, 608 observation car with a Macy Special drumhead on the observation deck, instruction sheets and booklets. All cars have cream inserts, nickel journals and are lettered Macy Special below the windows. The set is C7-8. The individual OBs are all marked WINE and the car boxes are also marked MS. The individual OBs are missing some flaps. The set box has no split corners and has a R.H. Macy and Co. Inc. New York sticker on the front. The two labels on the set box are intact.



2078

Lionel prewar O gauge unusual and scarce 817 peacock Lionel Lines caboose with peacock roof, red cupola, brass trim and copper journals. The caboose is C6-7.



2079

Lionel prewar two 54 maroon double gooseneck lamp posts in two worn OBs, C8.



2082

Lionel prewar O gauge four 2623 Lionel Lines Manhattan Pullmans with low rise simulated knuckle couplers. The cars have some minor nicks and are C8.



2080

Lionel prewar O gauge gray passenger set no. 97, circa 1925-26 in individual OBs and set box. The set contains the following; 251 electric 0-4-0 loco with black lettered brass plates, brass and nickel trim, two 605 Pullmans and a 606 observation. The cars have maroon trim and inserts and nickel journals. The set has some box rubs and a couple of minor nicks. Set is C7-8. The individual OBs are square with most all flaps attached and have bright and clean color graphics. The set box lid has four repaired corners. Both labels are fully intact.



2083

Lionel prewar O gauge Mojave passenger set no. 98, circa 1926-27 in individual OBs and outer set box. The set contains the following; 253 electric loco with brass and nickel trim, two 610 Pullmans, 612 observation, 88 rheostat, track clips, wooden bulb box, lockon, eight curve track sections, six straight track sections and instruction card. The passenger cars are the harder to find version with red inserts and nickel journals. The set is C7-8. The loco OB is complete with all flaps. The passenger car boxes are missing flaps. The set box has two labels, the top label is intact and the side label is missing a section on one side and has repairs.



2081

Lionel prewar O gauge 763E black semi scale 4-6-4 Hudson steam loco with a 2226WX Lionel Lines tender that has a high rise simulated knuckle coupler, circa 1941-42. The loco and tender are in OBs. The loco and tender are in OBs. The loco box is missing one interior flap. The loco box has an original cardboard insert, cotton wrap and original cardboard ring inset. The tender box has nice color graphics and is complete with all flaps.



2084

Lionel prewar two no. 54 pea green double gooseneck lamp posts, C8.



2085

Lionel prewar O gauge freight set no. 261W, circa 1940-41 in individual OBs and set box. The set contains the following; 226E black steam loco, 2226W die-cast Lionel Lines tender with black journals, 2816 black rubber-stamped hopper, 3811 automatic lumber car with five reproduction wooden logs and a 160 bin, 2817 red rubber-stamped caboose with Tuscan roof. The tender and cars have high rise simulated knuckle couplers. The set is C7-8. The loco and tender boxes have original cardboard inserts. The individual OBs have repairs and show wear. The set box has repairs and shows wear. The label is mostly intact.



2088

Lionel prewar O gauge two-tone green passenger Sears Promotional set no. 5178, Lionel number 236, circa 1931 in individual OBs and set box. The set contains the following; 262 black steam loco with brass and copper trim, 262T Lionel Lines tender with brass and copper trim and copper journals, two 607 Pullmans and an 608 observation car. The cars have cream inserts and copper journals. The set is C8 except for the car roofs which are C7-8. The loco box has an original cardboard insert. The individual OBs are clean and complete with all flaps. The set box has no split corners and has both labels intact with bright and clean color graphics.



2086

Lionel prewar O gauge red passenger set no. 292, circa 1929 in individual boxes and set box. the set contains the following; 248 electric 0-4-0 loco with cream inserts, brass and nickel trim, 629 Pullman and a 630 observation. The cars have cream inserts and nickel journals. The set is C7-8. The individual OBs have most all flaps attached. The set box has one split corner on the roof and the labels are intact.



2089

Lionel prewar O gauge 701 dark green rubber-stamped New York Central Lines electric loco with Lionel Mfg. plate and gold painted ventilators, circa 1915, C6.



2087

Lionel prewar O gauge 254 pea green electric loco with orange hatches, orange striping along the bottom edge of the body, black lettered brass plates, brass and nickel trim, C7-8.



2090

Lionel prewar O gauge scarce and unusual promotional Lionel Junior passenger set no. 8059, circa 1941-42 in individual OBs and original set box. The set contains the following; 1688 dull black Lionel Lines steam locomotive, 1689T Lionel Lines tender, four 1701 coaches, 1702 observation and 1703 observation car with a coupler. The fluted aluminum cars have red skirts and vestibules. The set is C7-8. The individual OBs have most all flaps attached. The set box is missing one interior flap and is creased on one side. The label is intact.



2091

Lionel prewar O gauge 153 dark green rubber-stamped New York Central Lines 0-4-0 electric loco with red window trim and nickel trim, C7-8.



2094

Lionel prewar O gauge original master carton ONLY for outfit no. 900 which contained a 230 PRR B-6 0-6-0 steam loco with a 2230T Pennsylvania slope-back tender. The box is complete with all flaps and label is fully intact with nice color graphics.



2092

Lionel prewar O gauge scarce Special 10 AMC olive green passenger set, circa 1933. The set contains the following: 254 electric 0-4-0 loco with red inserts and striping along the edge of the frame, black lettered brass plates, brass and nickel trim, two 605 Pullmans and a 606 observation car. The cars have red inserts and copper journals. The set is C6-7.



2095

Lionel prewar O gauge vermilion/maroon passenger set no. 6532W, circa 1936-37. This set consists of a 249 black steam loco with nickel trim, 265W Lionel Lines tender with nickel trim and journals, two 1685 Pullmans and a 1687 observation car. The cars have cream inserts, nickel trim and journals. The set is C7.



2093

Lionel prewar O gauge outfit no. 900 consisting of a 230 PRR B-6 0-6-0 steam loco with a 2230T Pennsylvania slope-back tender with black journals, circa 1939. The loco is C8 and the tender is C7-8.



2096

Lionel prewar O gauge 228 PRR B-6 0-6-0 switcher, version with rivet on smokebox door rather than embossed 228 and a 2228B Pennsylvania slope-back tender with black journals, circa 1941 both in OBs. The loco and tender have high rise simulated knuckle couplers. The set is C8. The OBs are complete with all flaps and loco box is sealed on label end which is intact.



2097

Lionel/Ives prewar O gauge transition lithographed freight set no. 5004, circa 1935 in individual OBs and set box. This set contains the following; 257 black stem loco with brass and copper trim, 259T four-wheel tender with brass Ives Lines plates and copper journals, 1707 tan/brown gondola, 1708 two-tone green cattle car with tan doors and door guides, 1709 green/peacock boxcar with orange doors and door guides and a 1712 orange caboose with maroon roof. The cars are all marked Ives and have copper journals. Lionel used the components in this special set to use up leftover Ives inventory. The loco and tender are C8, the gondola is C6 and the rest of the cars are C6-7. The loco is in a Lionel box and the tender and cars are all in Ives boxes. The loco box is missing three flaps on one end. The car boxes have most all flaps attached. The set box was originally an Ives box with two Lionel labels pasted on the top and side of the lid. Both labels are fully intact.



2098

Lionel prewar O gauge 253 harder to find maroon 0-4-0 electric loco with black lettered brass plates and brass and nickel trim, C7.



2099

Lionel prewar O gauge two no. 56 45N green lamp posts with four wires in OBs, C8. The boxes are complete with all flaps.



2100

Lionel prewar O gauge extremely rare Sears no. 100 Flying Yankee streamlined chrome passenger set with accessories in individual OBs and set box. The set contains the following; 616W power car with black top, three 617 coaches, a 618 observation car with chrome tail, chrome skirts and four 616T vestibules. One accessory included with this set is a no. 158 station and platforms set in master carton containing; 136 Lionelville station with 45N green base, cream walls, red roof, doors and window inserts, ivory door and window frames in individual OB and nickel plates and two 156 station platforms in individual OBs with original cardboard inserts and paper wrap. Other accessories included with this set are as follows; no. 87 die-cast railroad crossing signal with a red base, cream box marked with an X and ivory head in OB marked with an X, 137 Lioneltown station with Mojave base, ivory walls, red roof and doors, peacock window and door frames, ivory window inserts and brass plates, 52 silver lamp post with original paper wrap, type R 100-watts transformer, box of connecting ties and tube of lubricant, 167 whistle controller with original cardboard insert, sixteen O72 curve track sections and eight straight track sections, selection of wires and lockons. The train and accessories do have some minor nicks, otherwise the complete set is C8. The individual OBs are very clean and complete with all flaps. The set box is complete with all flaps and shows some wear.



2101

Lionel prewar standard gauge two no. 92 floodlight towers with terra cotta bases, pea green towers, brass lamp housings and plates in OBs. The bases have some minor nicks and are C7-8 and the towers are C8. The OBs are complete with all flaps.



2102

Lionel prewar standard gauge red passenger set no. 347, circa 1930 in individual OBs and unusual set box. The set box is the version with four flaps rather than a normal lift off lid. This set contains the following; no. 8 electric loco with cream inserts and striping along the bottom of the frame, black lettered brass plates, brass and nickel trim, 337 Pullman and a 338 observation car. The red cars have cream inserts and doors, brass trim and nickel journals. The set is C7-8. The individual OBs are complete with all flaps and are dated 1930. The set box is complete with label fully intact. The box is stamped RED underneath the label.



2103

Lionel prewar standard gauge 155 illuminated freight shed with white base, red floor, aluminum posts and finials, gray roof trimmed in red and nickel plates in OB. The freight shed is C7-8. The OB is missing one exterior flap on label end.



2106

Lionel prewar standard gauge no. 3 dummy trolley, circa 1910-11 with nine windows, green body, roof and lower platform end, cream widows, doors and clerestory roof and maroon suspended L-shaped steps. The trolley is lettered No. 3 ELECTRIC RAPID TRANSIT No. 3 and No. 3 on both ends. The trolley is C5-6.



2104

Lionel prewar standard gauge 163 freight station set in yellow OB that has original cardboard inserts. The set contains the following; two 57 red hand trucks, 161 45N green baggage truck and a 162 dump truck with yellow frame and blue dump, C7-8. The OB no split corners. The orange label is fully intact.



2107

Lionel prewar standard gauge no. 92 floodlight tower with red base, gray tower, nickel lamp housings and plate, circa 1942 in OB, C8. The OB is complete with all flaps, label end is sealed and label is fully intact.



2105

Lionel prewar standard gauge no. 3 power trolley, 1910-11 with nine windows, green body, roof and lower platform end, cream windows, doors and clerestory roof and maroon suspended L-shaped steps. The trolley is lettered No. 3 ELECTRIC RAPID TRANSIT No. 3 and No. 3 on both ends. The trolley has some paint flaking and is C4-5.



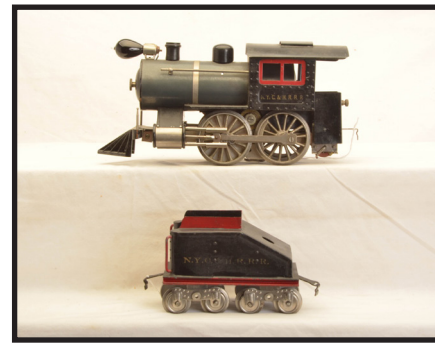
2108

Lionel prewar standard gauge Mojave passenger set no. 403, circa 1927-28 in individual OBs and set box. This set contains the following; 402 electric loco with black lettered brass plates which are rimmed in red, brass and nickel trim and dual small gear Super Motors, 419 baggage/Pullman car, 418 Pullman, a 490 observation car, 81 controlling rheostat in individual OB and a 91 state brown circuit breaker with brass light cover in individual OB. The cars have maroon inserts, wood grain doors, six-wheel trucks with nickel journals and NEW YORK CENTRAL LINES above the windows. The paint on the set is very clean, but does have a few minor nicks and scratches, otherwise set is C8. The loco box has an original cardboard insert and is missing all flaps on one end. The individual car OBs have most all flaps attached. The set box has a Macy label pasted on the Lionel label on one end and a Macy shipping label on the top of the box. The box has two labels on each end, one completely intact and one mostly intact. The set box shows wear and has repairs.



2109

Lionel prewar standard gauge 437 switch signal tower, harder version with late colors in OB. The tower has a red base, cream lower and upper walls, brown band between floors, orange roof, red door, 45N green windows and cream chimney, C7. The OB is complete with all flaps and label is mostly intact.



2112

Lionel prewar standard gauge no. 51 NYC and HRRR steam 0-4-0 loco with Russian blue boiler, red cab windows, high coal bunker, thin-rimmed drivers and an eight-wheel 100-series double-truck slope-back NYC and HRRR tender. The tender is embossed LIONEL MFG. CO N.Y. with red trim and stripe along the frame edge. The cowcatcher has been repainted otherwise the loco and tender care C7.



2110

Lionel prewar standard gauge freight set no. 363E, circa 1931 in individual OBs and set box. The set contains the following; 390E loco with red stripe and brass and copper trim, 390T tender with orange stripe and brass trim and nickel journals, 511 dark green flatcar with wood load and nickel stakes, 514R ivory refrigerator car with peacock roof, 515 ivory tank car, 516 red hopper with data capacity stamping and 517 pea green caboose with red roof. The 516 hopper has nickel journals and brass plates. The 511 gondola, 514R refrigerator car, 515 tank and 517 caboose have brass trim and copper journals. The loco has been rewheeled. Except for some minor nicks the set is C8. The loco box has an original cardboard insert. The loco and tender boxes are complete with all flaps. The car boxes have most all flaps attached. The set box shows some wear and label is fully intact.



2113

Lionel prewar standard gauge two no. 29 dark olive green day coaches, harder to find version with maroon bands through the windows and maroon primer on the undersides and ends. The day coaches have ten windows on each side, gold striping below the windows, NEW YORK CENTRAL LINES stamped under the windows on both sides of the cars, are embossed on the undersides LIONEL MFG. CO N.Y., have black wooden air tanks, three holes in the steps and a single gold chain on each open end platform. The cars are C7.



2111

Lionel prewar standard gauge 155 freight shed with a cream base, terra cotta floor, pea green posts, maroon roof with cream underside, brass finials and plates in a worn OB. The shed is C7-8.



2114

Lionel prewar standard gauge 300 Hell Gate Bridge with orange base, cream towers, apple green bridge, brass railings and plates, C7 in OB. The OB is missing two flaps on one end. The label is on the sealed end and is intact. The box does show some wear.



2115

Lionel prewar standard gauge olive green passenger set no. 347E with scarce Illinois Central lettering above the passenger car windows, circa 1929-30 in individual OBs and set box. The set contains the following; 8E electric 0-4-0 loco with red lettered brass plates, brass and nickel trim, 337 Pullman, a 338 observation car individual box of track clips, lockon, 81 controlling rheostat in individual box, eight curve track sections and two straight track sections. The cars have maroon inserts and doors, ILLINOIS CENTRAL above the windows and nickel journals. The set is C7-8. The passenger car boxes are stamped ILLINOIS CENTRAL. The individual OBs are complete with all flaps. The set box has both labels intact.



2118

Lionel prewar standard gauge dark olive green passenger set no. 34, circa 1912. The set contains the following; 34 electric 0-6-0 loco with block rubber-stamped New York Central Lines lettering, red window trim and striping along the bottom frame edge, brass and nickel trim, 35 Pullman and a 36 observation car with a long observation deck. The cars have two horizontal ribs under the windows and NEW YORK CENTRAL LINES above the windows. The set is C6-7.



2116

Lionel prewar standard gauge 840 Industrial power station with a pea green base, Mojave floor, cream walls, apple green window inserts, orange bands around building at first and second floor levels, orange roof and skylights in a worn OB. The station is complete with the steps, three smoke stacks with LIONEL across the center of the smoke stacks and the red water tank. The station is C7. The OB has a printed instruction sheet label on one side. The Lionel label is mostly intact on the other side.



2119

Lionel prewar standard gauge 192 accessory set in an original yellow box has an original die-cut cardboard insert. The set contains the following; two 184 lithographed bungalows that have green roofs, 189 villa with terra cotta base, white walls and peacock roof and dormers and a 191 villa with Mojave base, terra cotta walls and pea green roof and dormers. The set is C7-8. The lid has been repaired. The label is fully intact.



2117

Lionel prewar standard gauge scarce no. 42 peacock rubber-stamped New York Central Lines 0-4-4-0 electric loco with single motor, red window trim and striping along the bottom edge of the loco body and brass and nickel trim in OB. The loco is C6. The box is missing all flaps on one end.



2120

Lionel prewar standard gauge dark green passenger set no. 348E in individual OBs for the cars. The set contains the following; 380E with brass and nickel trim and red lettered brass plates, 429 baggage/combo, 428 Pullman and a 430 observation car. The cars have maroon inserts and doors and nickel journals. The loco has been rewheeled. The set is C7. There are two 428 boxes and a 429 box instead of a 428. 429 and 430 box. The boxes are complete with all flaps.



2121

Lionel prewar standard gauge 219 crane car, scarce version with reversed doors and windows. The doors are located in the back side of the cab and windows are located in the front side of the cab. The crane has a peacock cab, dark green roof, red boom, three nickel knobs, brass trim and nickel journals. The crane car is C5.



2124

Lionel prewar standard gauge 124 illuminated Lionel City station with gray base, terra cotta walls, mustard window and door frames, pea green roof and window inserts, maroon doors, mustard chimneys, nickel light fixtures and brass plates in OB. Also included are two no. 40 18-volt globe OBs. The paint on the station is bright and clean and station is C8. The OB is missing flaps on one end and is sealed with label intact on the other end.



2122

Lionel prewar standard gauge outfit no. 225 in yellow OB which contained a pair of 222 green automatic switches, two controllers, a no. 439 silver panel board with brass trim and two OBs for the signal cases. The switches are C8. The OB has original insert. The lid is missing one side and another section on another side



2125

Lionel prewar standard gauge Transcontinental Limited two-tone brown State set no. 411E, circa 1930-33. The set contains the following; a 408E State brown electric loco with red lettered brass plates, cream inserts and striping and two Bild-A-Loco motors, 412 California Pullman, 413 Colorado Pullman, 414 Illinois Pullman and a 416 New York observation car. The cars have light brown roof ventilators, cream window inserts, brass trim and die-cast journals. The interiors in all of the cars are original and complete. The dark brown roof on the loco has some paint missing along the edges and is C6-7. The cars are C7.



2123

Lionel prewar standard gauge scarce and desirable No. 9 Pay As You Enter trolley, circa 1909 with dual motors and nine windows. The trolley has cream sides with orange bands, orange roof, cream clerestory roof and closed platform with projecting windows. The trolley is C6.



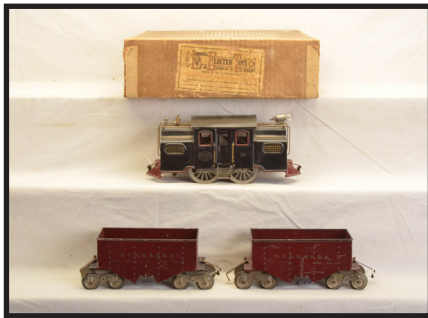
2126

Lionel prewar standard gauge 438 illuminated signal tower with Mojave base, pea green tower, cream upper base, orange walls, red roof and doors, white windows, lithographed chimney, brass plate and ladder, C7-8.



2127

Lionel prewar standard gauge unusual no. 38 pea green electric loco rubber-stamped NEW YORK CENTRAL LINES, C6.



2128

Lionel prewar standard gauge freight set no. 39, circa 1915 in scarce set box including; no. 38 black New York Central Lines electric loco with maroon windows and brass trim and two 116 maroon N.Y.N.H. and H.R.R. ballast cars. The engine is C7 and the cars are C6-7. The set box has label and inside of the lid has instruction label intact.



2129

Lionel prewar standard gauge two 63 aluminum lamp posts complete with bulbs in OBs, C7. OBs have all flaps attached.



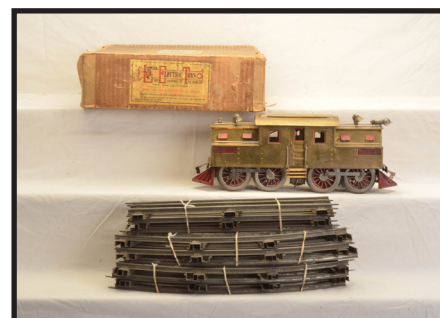
2130

Lionel prewar standard gauge peacock passenger set no. 373E, circa 1933 in individual OBs and set box. This set contains a hard to find version of a 390E black steam loco with no stripes, copper and brass trim and red lettered brass plates under the windows, 390T tender with orange striping, black lettered brass plates, brass trim and nickel journals, 332 baggage car, 339 Pullman and a 341 observation car. The cars are peacock with dark green roofs and have orange inserts and copper journals. The engine has been rewheeled. The loco frame has a warp. The engine is C7-8. The tender and cars are C8. The individual OBs are complete with all flaps. The set box has both labels intact and shows wear.



2131

Lionel prewar standard gauge 927 plot with flagpole with nickel base and black finial in OB. The shrubbery is intact. Plot is C8. The OB is complete with all flaps.



2132

Lionel prewar O gauge desirable no. 54 brass 0-4-4-0 electric loco with square hood, single motor, thick rimmed wheels, red painted ventilators, hatches and window trim and nickel trim, circa 1912 in scarce OB. Also included are eight curve track sections and four straight track sections. The loco is C7. The OB has label intact.



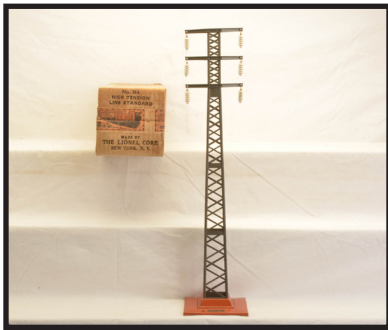
2133

Lionel prewar O gauge orange passenger cars with cream doors, black air tanks and are embossed on the underside LIONEL MFG. CO N.Y. including; 19 baggage/Parlor car with NEW YORK CENTRAL LINES above the windows missing a coupler, 18 Parlor car with very rare and unusual CHESAPEAKE AND OHIO R.R. above the windows missing both couplers and a 190 observation car with NEW YORK CENTRAL LINES above the windows and a long observation deck. The cars are C7.



2136

Lionel prewar standard gauge two-tone State green passenger cars with harder to find cream window inserts, brass trim and journals including; 412 California Pullman, 413 Colorado Pullman missing one hand rail and a 416 New York observation car. The interiors are original and complete and have rivet details on the ends. The cars are C6-7.



2134

Lionel prewar standard gauge no. 94 high tension tower with terra cotta base, dark gray tower, six original porcelain insulators and brass plate in OB. The tower is C8. The OB is complete with all flaps and sealed on one end.



2137

Lionel prewar standard gauge rare and desirable 414 Illinois Pullman two-tone green State car with cream inserts. The car has black lettered brass plates and brass journals. The interior of the car is original and complete. The 414 cream window Illinois Pullman was available as an add on to the 433E 20th Century State Set, circa 1931-33. This version of the Illinois Pullman seldom comes to the marketplace for sale. The car is C6-7.



2135

Lionel prewar standard gauge maroon/brown passenger set no. 52, circa 1915-19 in original set box that has original cardboard inserts. The set contains the following; no. 53 electric 0-4-0 loco rubber-stamped NEW YORK CENTRAL LINES with square hood, brass ventilators, dark olive green painted hatches and window trim, brass and nickel trim, 181 baggage/Pullman combo with brown baggage door, 180 Pullman, a 182 observation car with a long observation deck, eight curve track sections and four straight track sections. The cars are lettered NEW YORK CENTRAL LINES above the windows and have black wooden air tanks. The set is C7. The label on the set box is mostly intact.



2138

Lionel prewar standard gauge 390E two-tone green steam loco, scarce version with green frame and apple green stripe, brass and copper trim and two flags in an original envelope and a 390T dark green Lionel Lines tender with apple green striping, brass trim and nickel journals. The loco has been rewheeled. The loco and tender are C7. The loco is in an OB. The OB is complete with all flaps and has tape residue.



2139

Lionel prewar standard gauge no. 33 dark gray electric 0-4-0 loco rubber-stamped NEW YORK CENTRAL LINES with brass ventilators, brass and nickel trim, C7-8.



2142

Lionel prewar standard gauge 212 45N green gondola with four wooden barrels, nickel trim and journals in OB. The car is C8. The OB is clean and complete with all flaps.



2140

Lionel prewar standard gauge original set box ONLY for a 358W nickel trim freight set, circa 1936. This set contained the following; 400E gunmetal steam loco, 400W tender, 212 45N green gondola, 219 ivory derrick car, 220 floodlight car with 45N green base and a 217 red caboose. Also included is an instruction sheet for a whistle. The set box is complete with all flaps and label is fully intact and has bright and clean color graphics.



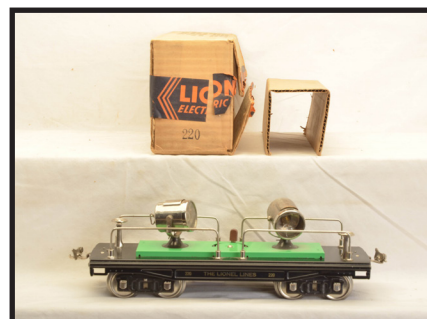
2143

Lionel prewar standard gauge 219 derrick car with yellow cab, red roof and windows, 45N green boom, three black knobs, nickel trim and journals in OB that has two original cardboard insert. Also included is an instruction sheet. The car is C7-8. The OB is complete with all flaps.



2141

Lionel prewar standard gauge 400E gunmetal 4-4-4 steam loco with brass L plates under the cab windows and painted boiler bands and a 400W whistle Lionel Lines tender with aluminum and red plates, brass L plate and nickel journals in OBs. The loco and tender have all nickel trim, C8. The loco box has an original cardboard insert and is missing all flaps on one end. The tender box is missing one exterior flap.



2144

Lionel prewar standard gauge 220 searchlight car with a 45N green platform, all nickel trim and journals in OB, C8. The OB has an original cardboard insert, is complete with all flaps. The box is bright and clean.



2145

Lionel prewar standard gauge 217 red caboose with cream doors, nickel trim and journals in OB. Except for a one small scratch on the cupola, the car is C8. The OB is complete with all flaps and has minor staining.



2148

Lionel prewar standard gauge 33 dark green rubber-stamped New York Central Lines 0-4-0 electric loco with red window trim and red stripe along edge of the frame, brass ventilators, brass and nickel trim. The loco is C7.



2146

Lionel prewar standard gauge orange passenger set no. 349E, circa 1929-30. The set contains the following; a 9E electric loco with red lettered brass plates and brass trim and a Bild-A-LoCo motor, 429 baggage/Parlor combo car, 428 Parlor car and a 430 observation car. The cars have apple green inserts and nickel journals. The loco has been rewheeled. Set is C7-8. The cars have individual OBs. The car OBs have all flaps attached, except for the 430 box which is missing one interior flap. The boxes show some wear.



2149

Lionel prewar standard gauge 94 high tension tower with dark red base, aluminum tower, brass plate and six original white porcelain insulators in OB, C8. The OB is complete with all flaps and label is intact.



2147

Lionel prewar standard gauge two no. 83 die-cast traffic and crossing signals with cream box and white head, one with dark red base and one with a red base. The die-casting is solid. The signals is C7-8.



2150

Lionel prewar standard gauge incredible preproduction dark blue painted 400E and 400T tender both with red striping. This dark blue 400E loco and tender was built in the Engineering shop at Lionel as a mechanical and paint sample and is one example of only two known to exist. This is a very unique locomotive which was displayed and run at the Lionel Chicago Merchandise Mart Showroom layout during 1932. Mechanically it has a preproduction chugger which was not introduced until 1933. The loco and tender have brass and copper trim and the tender has brass journals. The loco is C7-8 and the tender is C8. This loco and tender was brought into Stout Auctions in Indiana by the widow of an employee from the Chicago Merchandise Mart Showroom. Included with this loco is an issue of Fortune Magazine dated December 1932 with this loco pictured on page 42. This is one of the highlights of the Jerry Poch collection and is an important part of Lionel history.



2151

Lionel prewar standard gauge darker two-tone Blue Comet passenger cars, rare versions with dark blue vestibules, circa 1932 including; 420 Faye Pullman, 421 Westphal Pullman and a 422 Tempel observation car. These cars have brass plates, trim and journals. The interiors are original and complete. The cars are 7-8.



2154

Lionel prewar standard gauge no. 2 red powered trolley with yellow doors, six windows, yellow clerestory, offset windows with closed end platforms and gold rubber-stamped 2 ELECTRIC RAPID TRANSIT 2. The trolley is C6-7.



2152

Lionel prewar O or standard gauge two 80N semaphores with red bases, aluminum-poles, black ladders and nickel finials in OBs, one with an original cardboard insert, C7-8. Also included is an instruction sheet. The OBs have replacement flaps.



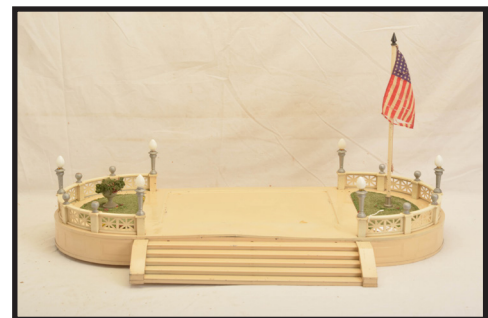
2155

Lionel prewar standard gauge no. 2 red non-powered trolley with yellow doors, six windows, yellow clerestory, offset windows with closed end platforms and gold rubber-stamped 2 ELECTRIC RAPID TRANSIT 2. The trolley is C6-7.



2153

Lionel prewar standard gauge 444 roundhouse section with terra cotta walls, cream trim, maroon windows, dark green skylights, interior lights and pea green roofs. The roundhouse is complete with all windows, doors and both skylights. The roundhouse is C6-7.



2156

Lionel prewar standard gauge 129 terrace with ivory base, white railings, aluminum painted lamp posts and decorative balls and two plots, one with flagpole with nickel pedestal and black finial and one with a gray flower urn. The terrace is C6-7.



2157

Lionel prewar standard gauge original box ONLY for no. 128 station and terrace set. This set contained a 129 terrace and a 115 station. The OB is numbered 1 and 2 and is no. 1 for the terrace. The box has an original cardboard insert. The box is missing one interior flap.



2160

Lionel prewar standard gauge promotional scarce Montgomery Ward Midnight Blue passenger set no. 34X, circa 1913. This set contains the following; 33 rubber-stamped NEW YORK CENTRAL LINES 0-4-0 electric loco with brass ventilators, brass and nickel trim, 35 Pullman and a 36 observation car with a long observation deck. The cars have THE NEW YORK CENTRAL LINES above the windows. The roof on the engine has been repainted. There are three holes drilled in the bottoms of both cars. The loco is C7 and the cars are C6.



2158

Lionel prewar standard gauge 115 Lionel City station with red base and trim, ivory walls, aluminum painted light fixtures, nickel clock inserts, packet, three uncoiled wires, two UTC lockons and two individual OBs with no. 40 18V lamps in OB that has two original cardboard inserts. The paint on the station is bright and clean. Station is C8. The OB is very clean and square. The label end of the box is sealed and label is fully intact with bright and clean color graphics.



2161

Lionel prewar standard gauge 444 roundhouse section with terra cotta walls, cream trim, maroon windows, dark green skylights, interior lights and pea green roofs. The roundhouse is complete with all windows, doors and both skylights. The roundhouse is C6-7.



2159

Lionel prewar standard gauge 1911 dark olive green rubber-stamped New York New Haven and Hartford 0-4-0 electric loco with thin-rimmed drivers, square hood, maroon hatches, ventilator grills and window trim, nickel and gold trim, C5.



2162

Lionel prewar standard gauge coal train freight set no. 340E, circa 1929 including; 318E black electric loco with red lettered brass plates and brass trim, three 516 red coal hoppers and a 517 red caboose with orange windows and black roof. The hoppers have gold rubber-stamped lettering with capacity data on the sides. The cars have brass trim and nickel journals. The loco has been rewheeled. The caboose has one large scratch on one side, otherwise the set is C7.



2163

Scarce and desirable Lionel prewar standard gauge 400W black tender with whistle, red and nickel plates, nickel trim and nickel journals. Lionel never cataloged a black 400W tender with nickel trim, however dealers could special order from Lionel a black tender with a whistle added. The tender is C7-8. This is a very unique piece.



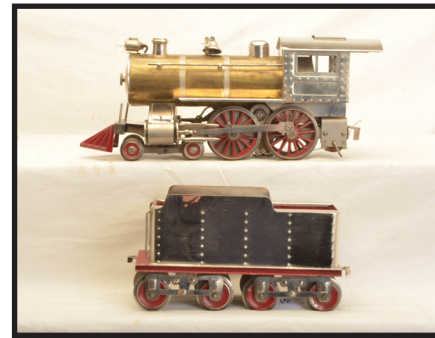
2166

Lionel prewar standard gauge Mojave passenger set no. 342E, circa 1926 in set box. The set contains the following; 318E electric loco with red lettered brass plates and brass trim, 310 baggage with dark green doors, 309 Pullman with wood grain doors and a 312 observation car with maroon doors. The cars have maroon inserts and nickel journals. The loco is rewheeled. Set is C8. The cars are in individual OBs that are complete with all flaps. The set box is worn.



2164

Fantastic Lionel prewar standard gauge very scarce dark olive green passenger set no. 350, circa 1925-26 in individual OBs and set box, This set contains the following; 8 electric 0-4-0 loco with black lettered brass plates brass and nickel trim, 35 Pullman and a 36 observation car. The cars are dark olive green, have ribbed sides, lettered NEW YORK CENTRAL LINES above the windows and have nickel journals. The loco has been rewheeled. The set is C7. The individual OBs are missing are complete with all flaps except for one interior flap. The labels are intact on the set box, but the set box does show some wear.



2167

Lionel prewar standard gauge desirable no. 6 special nickel and brass 4-4-0 steam loco with thin rimmed wheels and split frame and an eight-wheel nickel tender with red interior and frame, circa 1909. This loco and tender came from the Louis Hertz collection. This is a fantastic example of a no. 6 Special and is C8.



2165

Lionel prewar standard gauge scarce no. 42 maroon rubber-stamped NEW YORK CENTRAL LINES 0-4-4-0 electric loco with brass and nickel trim. The loco is C5-6.



2168

Lionel prewar standard gauge two 1910 dark olive Pullmans, circa 1909-10 with three high black wooden roof knobs. The cars have an unusual design with trucks mounted near the ends of the car and have ribbed vestibules. The cars have maroon doors and are painted with maroon primer on the undersides of the cars. The Pullmans have some paint touch up. Other than the paint touch up the cars look C8. These cars were obtained from the Louis Hertz collection.



2169

Lionel prewar standard gauge 124 station with unusual nickel light fixtures, 45N green base, beige walls, off white trim and chimneys, red roof and nickel plates. The station is C8 and the roof is C7-8.



2172

Lionel prewar 912 landscape plot with a 189 illuminated suburban villa in OB. The villa has gray base, mustard walls and dormers, apple green roof and terra cotta chimney. All shrubbery, trees and grass are intact. The plot is C8. The OB is complete with all flaps and label is intact.



2170

Lionel prewar standard gauge scarce red Macys Special no. 2 passenger set, circa 1930-32 in individual OBs and set box. This set contains the following: 384E black steam loco with red lettered brass plates under the cab windows, brass and copper trim and green striping and windows, 384 black crackle Lionel Lines tender with brass and copper trim and brass journals, 332 Railway Mail baggage car, 337 Pullman, a 338 observation car with a Macys drumhead, 68 red railroad crossing sign with nickel cross buck and finial. The cars have cream inserts and nickel journals, except for the observation car which has copper journals. The loco has been rewheeled and loco frame has a slight warp. The set is C7-8. The loco and tender boxes have original cardboard inserts. The individual OBs are complete with all flaps and the car boxes are stamped red. The set box has a spit on one corner of the lid.



2173

Lionel prewar standard gauge no. 100 trolley, circa 1912-14, scarce version that reads 100 LINDEN AVE 100 under the windows. The trolley has a blue body and roof, closed rounded platform ends, five windows and cream clerestory, window section and doors. This trolley was for sale by a Baltimore area retailer. The trolley is C5.



2171

Lionel prewar 911 illuminated Country Estate landscaped plot in OB. The 191 villa has a Mojave base, crackle red walls, cream chimney, pea green roof with crackle red dormers and ivory window inserts and doors. The trees and shrubbery are intact. The plot is C8. The box is complete with all flaps and label is fully intact.



2174

Lionel prewar 922 illuminated lamp terrace with a 56 copper lamp post, C7-8.



2175

Lionel prewar standard gauge rare one of a kind paint sample cream and red 347 passenger set in individual OBs and set box. This set was found by a collector in a home located in Long Island, NY. The set contains the following; 8 cream electric loco with red striping along the edge of the frame; 8 cream electric loco with red striping along the edge of the frame and red window inserts, brass and nickel trim, 337 Pullman and a 338 observation car. The cream cars have red roofs and inserts, nickel journals, brass steps and observation deck. The set is C7. The individual OBs is complete with all flaps. The set box lid has all four corners split and show wear. The labels are intact.



2178

Lionel prewar standard gauge hard to find no. 8 Pay As You Enter Trolley with dark green sides, roof, platform and lower panels, cream windows, door and clerestory roof, maroon steps and lettered under the windows 8 PAY AS YOU ENTER 8. The trolley is C6.



2176

Lionel prewar 913 illuminated bungalow landscaped plot with a 184 lithographed bungalow that has a red lithographed roof in OB that has an original cardboard inset. All shrubs and trees are intact with vibrant colors. The plot is C8-9. The OB is missing one interior flap and label is fully intact.



2179

Lionel prewar standard gauge no. 29 dark olive green day coach with nine windows, circa 1908 gold striping below the windows, No. 29 N.Y.C. and H.R.R.R. No. 29 stamped under the windows on both sides, with yellow primer on the underside and inside of the coach. This car is embossed LIONEL MFG. CO N.Y. on the underside of the frame. The car is C5.



2177

Lionel prewar standard gauge passenger set no. 367W, later version, circa 1935-39 in individual OBs. The set contains the following; 385E light gunmetal steam loco with nickel trim, painted boiler bands and black wheels, 385W The Lionel Railway Lines die-cast tender with black and brass plates, nickel trim and journals, 1767 baggage car, 1766 Pullman and a 1768 observation car. The passenger cars are red with maroon roofs, aluminum inserts, nickel trim and journals. The set is C7-8.



2180

Lionel prewar standard gauge dark olive green passenger set no. 620 in an unusual wooden crate from Lionel. The set contains the following; no. 6 N.Y.C. and H.R.R.R. 4-4-0 steam loco with thick rimmed drivers and Russian blue iron boiler, N.Y.C. and H.R.R.R. tender with red trim, 19 Pullman/Baggage car, 18 Pullman and a 190 observation car with a long observation deck. The cars have maroon doors and window ledges and black wooden air tanks. The set is C7-8. The wooden crate has printing on the top lid From The Lionel Corp., Irvington, NJ. There is also a shipping label addressed to Schultz and Co., 261 Central Ave., Passaic, New Jersey.



2181

Lionel prewar no. 55 remote control airplane, circa 1937-39 with red die-cast control box and airplane that has aluminum painted wing and stabilizer trim in OB with two original cardboard inserts. The propeller is missing from the airplane. Airplane is C7. The box is complete with all flaps. Box shows some wear.



2184

Lionel prewar standard gauge 194 accessory set with individual OBs and master carton, circa 1927-1929. The Accessory Set contains; 69 olive green warning bell signal with brass cross buck and finial, 76 Mojave block signal, 77 crossing gate with dark green base, maroon mechanical box and pea green gate 78 train control signal with orange base, cream pole, pea green ladder and white head, 80 semaphore with terra cotta base, dark green ladder, Mojave pole and brass finial, in OB. The accessories are C7-8. The 77 OB has original cardboard insert. The individual OBs have most flaps attached. The master carton has four split corners on the lid and both labels are intact. The individual OBs are longer in order to accommodate the insulated track section however the 78 OB is the incorrect shorter version.



2182

Lionel prewar no. 51 lithographed two-piece square heavy paper stock airport base. circa 1936 which measures 60 inches by 60 inches. The paper stock mat has been laminated. The paper mat has some damage and staining.



2185

Lionel prewar standard gauge freight set no. 39, circa 1913-14 in scarce set box with two original cardboard inserts. The set contains the following; no. 38 black rubber-stamped New York Central Lines electric loco with red striping along the frame edge and windows and brass and nickel trim and two 116 maroon N.Y.N.H. and H. ballast cars. The loco is C7 and the cars are C6. The set box has no split corners and both labels are fully intact.



2183

Lionel prewar standard gauge Stephen Girard green passenger set no. 378W, circa 1936-39 in individual OBs. The set contains the following; 392E gunmetal steam loco with all nickel trim, 384W twelve-wheel Lionel Lines tender with all nickel trim and journals, 424 Liberty Bell Pullman, 425 Stephen Girard Pullman and a 426 Coral Isle observation car with a Pennsylvania Limited drumhead on the nickel observation deck. The passenger cars have cream inserts, brass plates, nickel trim and nickel journals. The set is C7-8. The loco box has an original cardboard insert. The individual OBs have all flaps attached except for one interior flap on the tender box.



2186

Lionel prewar standard gauge no. 42 dark olive green rubber-stamped New York Central Lines 0-4-4-0 electric loco with thick rimmed wheels, round hood, brass and nickel trim. The loco is C7.



2187

Lionel prewar standard gauge no. 86 accessory set containing six no. 85 telegraph posts with black bases, orange poles, red cross arms, white insulators and brass finials, C7-8. The accessory set is in an original yellow box with original picture cardboard insert. The box lid is missing one end piece which is partially included. The lid has a split corner and label is intact.



2190

Lionel prewar standard gauge Blue Comet passenger set no. 396E, circa 1930 in individual OBs, except for the loco box. The set contains the following; 390E steam loco with cream striping, brass and copper trim, 390T Lionel Lines tender with cream striping, brass trim and nickel journals, 420 Faye Pullman, 421 Westphal Pullman and a 422 Tempel observation car. The cars have cream inserts, brass plates and die-cast journals. The paint on the set is clean. Except for some minor rubs and nicks the set is C8. The tender box is complete with all flaps. The car boxes are missing some flaps.



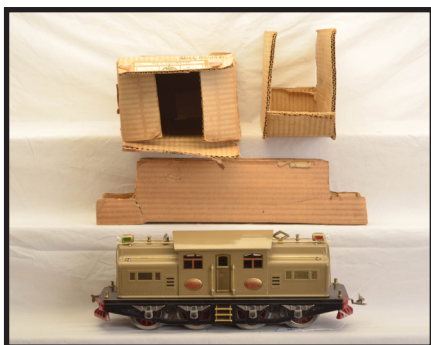
2188

Lionel prewar standard gauge harder to find uncataloged 408E State car dark green electric 0-4-4-0 loco with brass ventilators in OB. The loco has red lettered brass plates, brass, copper and nickel trim and red pilots. The loco is C8. The OB has two original cardboard inserts, is very clean and square and it lettered 408E SPEC GREEN. The box is sealed on one end and is complete with all flaps.



2191

Lionel prewar standard gauge no. 11 maroon flatcar early version with yellow primer on underside of frame and no embossing. The car has 10-series solid side three rivet trucks. The car is C5.



2189

Lionel prewar standard gauge 402E Mojave electric loco with red lettered brass plates, brass and nickel trim and dual motors in OB with two original cardboard insert. The loco has been rewheeled. The loco is C8. The OB is missing one exterior flap.



2192

Lionel prewar standard gauge no. 12 red Lake Shore gondola early version with yellow primer on underside of frame and LIONEL MFG CO INC embossing, the car has green stripes along the top and bottom edge of the car frame. The car has 10-series single rivet open sided flex trucks. The car is missing one brake wheel. The car is C6.



2193

Lionel prewar standard gauge no. 14 red C.M. and St.P boxcar early version with yellow primer on underside of frame and yellow primer interior. The car has black painted ribs. and the frame is embossed LIONEL MFG. CO N.Y. on the underside. The car has 10-series open side single rivet flex trucks. The car is C7.



2196

Lionel prewar standard gauge no. 17 red N.Y.C. and H.R.R.R. caboose with black roof early version with yellow primer on underside of the frame and yellow primer interior. The caboose is the version with awnings over the windows. The car has no embossing and 10-series single rivet trucks. The caboose is C7.



2194

Lionel prewar standard gauge no. 15 maroon Pennsylvania tank car early version with yellow primer on underside of the black girder and wooden dome and ends. The car has 10-series open side three rivet flex trucks. The car is C5.



2197

Lionel prewar standard gauge scarce early 5 special 0-4-0 steam loco rubber-stamped in gold B. and O.R.R. Loco has thin-rimmed drivers and high coal bunker. The boiler has a wooden stack, dome, and pilot beam. The loco is C5.



2195

Lionel prewar standard gauge no. 16 maroon Pennsylvania R.R. ballast car early version with yellow primer on underside of the dump and black girder. The car has 10-series open side three rivet flex trucks. The car is C6-7.



2198

Lionel prewar standard gauge no. 101 powered Summer trolley with five benches that have blue sides, blue roof and ends, yellow roof clerestory, maroon base sides and gold rubber-stamped 101 ELECTRIC RAPID TRANSIT 101. The trolley is embossed LIONEL MFG. CO N.Y. on the underside. The trolley is C6.



2199

Lionel prewar standard gauge scarce no. 1100 non-powered Summer trolley trailer with five benches that have blue sides, blue roof and ends, yellow roof clerestory, maroon base sides and gold rubber-stamped 1100 ELECTRIC RAPID TRANSIT 1100. The trolley is embossed LIONEL MFG. CO N.Y. The trolley is C5



2201

Lionel prewar 2 7/8 gauge no. 100 maroon Baltimore and Ohio powered electric loco with black roof and gold B and O lettering No. 5 on both sides and No. 5 on both ends. The loco is C6.



2200

Lionel prewar standard gauge very scarce and unusual passenger set no. PO-90 in individual OBs and set box. The set contains the following: 380 dark green electric loco with red lettered brass plates, brass and nickel trim, 418 Parlor car, 431 dining car and a 490 observation car. The cars are apple green with maroon doors, red window inserts and nickel journals. This set was obtained from the original owner and is not documented in this configuration. The set was found with the following accessories included; two no. 56 pea green lamp posts, no. 58 maroon lamp post, 67 dark green double lamp post, 076 ivory block signal, two no. 077 crossing gates with dark green bases, maroon mechanism boxes with nickel covers, pea green gates and each has a no. 40 18-volt globe box, 80 semaphore with dark green base, peacock ladder, orange pole and brass finial, no. 81 rheostat. The accessories are all in OBs except for the 76 block signal. The loco has been rewheeled and is C7-8. Except for a couple of minor nicks, the cars are C8. The accessories are C7-8. The engine box is stamped D.GREEN and is missing one exterior flap. The car boxes are stamped P.GREEN and are complete with all flaps. The accessory boxes are missing some flaps. The set box is missing one side on the lid but both labels are intact. The set box shows wear. This is a very unusual set.



2202

Lionel prewar 2 7/8 gauge no. 200 maroon motorized Lake Shore steel gondola. The gondola is C5.



2203

Lionel prewar 2 7/8 gauge no. 400 maroon non-powered Lake Shore steel gondola Express trail car. The car has no. 2426 on both ends. The gondola is C6-7.



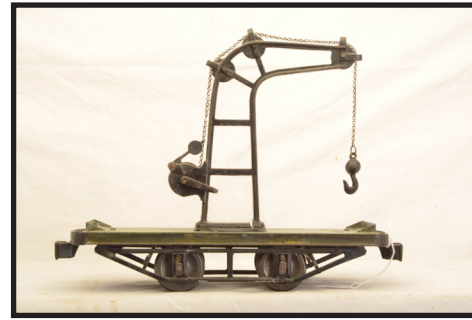
2204

Lionel prewar 2 7/8 gauge no. 900 maroon Metropolitan Express box trail car with black roof, C6.



2205

Lionel prewar 2 7/8 gauge no. 1000 maroon motorized Metropolitan St.R.R. Co. passenger car with black roof. The car has paint touch up. The car is C5.



2208

Lionel prewar 2 7/8 gauge no. 600 green derrick trailer with black cast iron frame and derrick, circa 1903. The derrick trailer is C6.



2206

Lionel prewar 2 7/8 gauge ten no. 380 dark green cast iron elevated pillars. Also included are ten no. 310 curve track sections and two straight track sections with wood ties. The pillars and track are C6.



2209

Jehru Garlick 1 7/8 gauge rare and unusual no. 2 live steam 2-2-2 loco with single driver and eight-wheel tender, circa 1891. The boiler front on the loco is embossed Manufactured by Jehru Garlick Patterson N.J. The loco has minor paint touch up and is C6. The tender is C5.



2207

Lionel prewar 2 7/8 gauge very rare no. 100 green Baltimore and Ohio powered electric loco with black roof and gold B and O lettering No. 5 on both sides and No. 5 on both ends, circa 1903. The loco is C4. The green version of the 100 B and O loco is the only example that we have ever sold.



2210

Dorfan prewar narrow gauge red lithographed passenger set no. 200 in set box with original cardboard inserts. This set contains the following; no. 50 red-enameled die-cast 0-4-0 electric steam outline loco, type I four-wheel red tender with black frame, two 356 red four-wheel passenger cars with black frames. The loco has yellow die-cast wheels and DORFAN embossed on cab sides under windows. The die-cast body on the loco is solid and intact, which is unusual for Dorfan. The loco is C7. The tender and cars are C7-8. The set box has three split corner. Both labels are intact.



2211

Dorfan prewar narrow gauge lithographed passenger set no. 135 in set box with original cardboard dividers. The set contains the following; 154 black die-cast clockwork 0-4-0 steam loco with a 160 four-wheel black and red tender, two 355 red and yellow Pullmans, a 310 tunnel, 340 Railroad danger signal, four wide radius curve track sections and six straight track sections.

The set is C7-8. The set box has no split corners.



2214

Dorfan prewar narrow gauge green passenger set in set box with original cardboard insert. The set number is faded. The set contains the following; no. 53 C.M. and St. Paul die-cast take-apart loco, 492 American Railway Express baggage cars, 496 Boston Pullman and a 494 observation car. The cars have red doors and windows, figures in the windows and nickel journals. The loco is C7 and the cars are C7-8. The OB is complete with no split corners. Both labels are intact and have nice color graphics.



2212

Dorfan prewar narrow gauge passenger set no. 230 in set box including; no. 51 red take-apart red NYC electric loco with a 498 Boston Pullman and a 498 Seattle Pullman. The eight-wheel olive green Pullmans have silhouettes in the windows. The loco is C7-8. The cars are C8. The box has no split corners and both labels are fully intact with nice color graphics.



2215

Dorfan prewar narrow gauge lithographed freight set in a set box with original cardboard inserts. The set contains the following; no. 53 black take-apart 0-4-0 die-cast electric loco with red windows and brass trim, 601 yellow NYC boxcar with mustard roof, 602 green Union Pacific boxcar, 603 orange P.R.R. boxcar with burnt orange roof, 604 red Indian Refining Co. tank car, 605 P.R.R. hopper, 610 two-tone green derrick with red boom and a 607 red caboose with green roof. The eight-wheel freight cars have brass trim, except for the derrick and 602 boxcar which have nickel trim. The set is C6-7.

The set box shows wear but has both labels intact.



2213

Dorfan prewar narrow gauge no. 421 automatic gate with green platform, orange and brass Railroad crossing sign and black and white crossing gate in OB, C6-7. The OB has a detached side which is included, has a split corner and label is intact.



2216

Dorfan prewar narrow gauge very rare 770 die-cast steam outline 4-4-0 loco with cream stripe and windows and brass plates and a four-wheel Dorfan Lines tender, circa 1930. The loco has paint touch up and is C5. The tender is C6.



2217

Dorfan prewar narrow gauge Blue Diamond Express passenger set no. 255 in set box with original cardboard inserts. The set contains the following; 52 take-apart die-cast 0-4-0 electric loco with hand reverse embossed NYC 51 with brass trim, 490 Boston Pullman, 490 Seattle Pullman, 491 observation car, eight curve track sections and two straight track sections. The eight-wheel cars have red doors and silhouettes. The loco is C7 and the cars are C7-8. The OB has four split corners and both labels are fully intact.



2220

Dorfan prewar wide gauge lithographed passenger set no. 700 in individual cardboard box dividers and set box. The set contains the following; 3920 maroon Loco-Builder die-cast 0-4-0 loco with yellow windows, brass and black trim, 789 Mountain Brook Pullman, 790 Pleasant View Pullman and lock on. The passenger cars are mustard with orange trim and have black steel trucks. The set is C7-8. The inner divider box inserts are clean and complete. The set box lid has four split corners and shows wear. Both labels are fully intact.



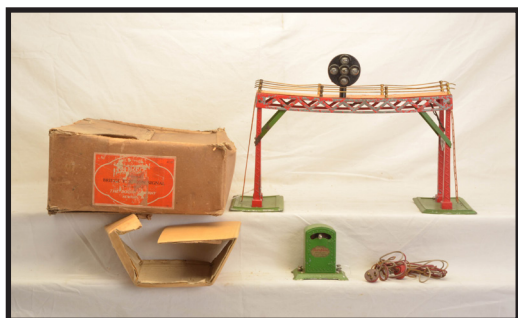
2218

Dorfan prewar narrow gauge red passenger set no. 4 or 1 in original set box with original cardboard insert. The set contains the following; 55 red die-cast steam outline loco with yellow wheels, brass and nickel trim, four-wheel Dorfan Lines tender, 498 Atlanta Pullman 499 observation car and instruction sheet. The set is C7. The set box has a John Wanamaker sticker on one end. The OB has no split corners and both labels are intact. The set number is hard to read and could be a no. 4 or 1.



2221

Dorfan prewar 416/1416 die-cast warning signal with green base, orange pole and black lettered brass cross buck. The signal is C6-7,



2219

Dorfan prewar narrow or wide gauge no. 418 die-cast signal bridge with one position light signal, circa 1930 with a green circuit breaker and wires in OB with original cardboard insert. The signal is warped and has paint flaking. The signal bridge is C5. One of the top flaps on the box is missing a section and box shows wear. Label is intact but is skinned.



2222

Dorfan prewar wide gauge scarce and desirable green Palmetto Limited passenger set, circa 1929 with individual original cardboard box dividers and set box. The set contains the following; 1134 die-cast 4-4-2 steam loco with Ives body casting, red trim, brass and copper trim, The Dorfan Lines tender with Ives body casting, red frame and brass journals, 995 American Railway Express baggage car numbered 770, 994 Washington Pullman numbered 772 and a 996 observation car numbered 773. The cars have red trim, figures in the windows and nickel journals. The tender and cars have die-cast trucks. The castings on the loco tender and trucks are solid and intact. The loco has paint touch up and repaired window, cowcatcher and headlight and is C6. The car wheels are beginning to disintegrate. The tender and cars are C7-8. The interior box dividers are very clean. The set box has repaired corners and both labels are intact.



2223

Dorfan prewar wide gauge gray passenger set. The set contains the following; 3920 Loco-Builder die-cast 0-4-0 loco with red windows, brass and black trim and two Washington Pullmans with green window trim and tan doors, one 990 with figures and one 991 with bulls eye windows on each end. The loco is C6 and the cars are C7.



2226

Dorfan prewar wide gauge 800 orange lithographed NYC gondolas with brass trim. The die-cast trucks are intact but have been repainted. The journals have been repainted silver. The gondola is C7.



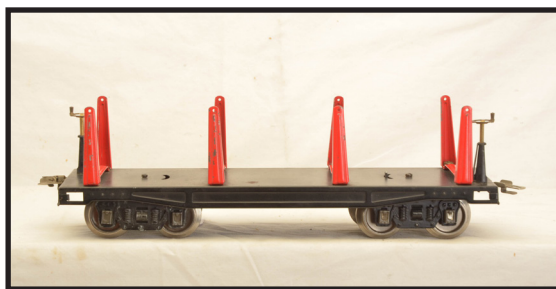
2224

Dorfan prewar wide gauge 1134 black die-cast 4-4-2 steam loco with red striping, brass and copper trim and a The Dorfan Lines tender with red frame, brass trim and journals. Both the loco and tender have Ives body castings. The tender has a slight warp. The die-casting on the loco, tender and trucks are intact. Loco and tender are C6-7.



2227

Dorfan prewar wide gauge no. 801 green lithographed AT and SF double door boxcar with red roof and brass trim. The die-cast trucks and wheels are original and intact. The car is C5-6.



2225

Dorfan prewar wide gauge 809 black lumber car with red stakes and brass brake wheels. The car has no load. The wheels have been replaced. The die-cast trucks are original and intact. The car is C7.



2228

Dorfan prewar wide gauge no. 804 Robins Egg blue lithographed Union Tank car numbered 29325 with red cradles and brass trim. The die-cast wheels have been replaced. The die-cast trucks are intact. The tank is C7.



2229

Dorfan prewar wide gauge 805 red lithographed P.R.R. hopper numbered 11701. The die-cast wheels and trucks are original and intact. The car is C6.



2230

Dorfan prewar wide gauge scarce and desirable no. 806 caboose, version which is brown painted with THE DORFAN LINE and 3931 decals. The car has a turquoise roof, red cupola, cream window inserts and brass trim. The die-cast wheels and trucks are intact. The caboose is C7.



2231

American Flyer prewar O gauge The Sunset Limited orange lithographed passenger set no. 13, circa 1928-29 in OB with original cardboard inserts. The set contains the following; no. 12 type XII black 0-4-0 clockwork cast iron steam loco missing one side rods, 120 tender, 1108 baggage, 1107 Jefferson coach, eight curve track sections and two straight track sections. The four-wheel cars are 5 1/2 inches in length. The wheels on the loco are disintegrating. The set is C8. The set box has no split corners and label is intact.



2232

American Flyer prewar O gauge switcher freight set no. 19, circa 1939 in individual OBs and set box. The set contains a 431 loco/tender combination consisting of a 429 Yard King 0-6-0 switcher and 430 AFL slope-back tender, 412 Bordens milk car, 410 silver tank with green frame, brass ladder and bands, copper dome, railings and supports, 408 orange boxcar with Turquoise roof and door and a 411 red illuminated caboose. The tender and freight cars have link couplers and black trucks with brass journals. The cars have brass trim. The loco and tender have very light run time. The cars have been test run. This is a very high quality matched original set. The set is C8-9. The individual OBs are clean and complete with all flaps. The set box is complete with all flaps but shows some wear. The label is intact.



2233

American Flyer prewar O gauge 237 lithographed station set consisting of a 104 Kenilworth station, 91 Flyer Town Freight station, track terminal, semaphore and single arc light in OB. The station set is C8. The OB is complete and label is mostly intact. The box shows wear.



2234

American Flyer prewar O gauge two-tone Rolls Royce Blue passenger set 1346, circa 1928-30. The set contains the following; 3115 NYC type electric loco with brass plates and trim, 3280 Club Car, 3281 Pullman and a 3282 observation car. The cars have GOLDEN STATE plates above the windows, brass trim and journals. The paint on the set is clean, however it does have some nicks. The set is C7-8.



2235

American Flyer prewar O gauge lithographed Hiawatha freight set in original set box. The set contains; 643 loco/tender combination consisting of a 630 electric Hiawatha loco, 3192 coal tender, 3216 black log car with load, 31113 yellow and green sand car, X-1128 yellow Texaco tank, 311267 red Pennsylvania hopper, yellow Wheaties boxcar and 1127 red AFL caboose. The tender and cars all have four wheels with no journals. The set is C7-8. The set box is damaged however the is label fully intact. The set number is not visible.



2238

American Flyer prewar O gauge clockwork lithographed passenger set including; no. 2 black cast iron clockwork 0-4-0 steam loco with green band under the cab windows and hand rails, 328 red four-wheel tender with brown frame and two four-wheel Chicago coaches with four window, three riser step Chicago coaches, black roofs and light green frames. The loco is missing side rods on one side. Loco and tender are C6-7. The cars are C7.



2236

American Flyer prewar O gauge Hiawatha lithographed streamliner passenger set no. 660, circa 1936-38. The set contains the following; clockwork loco with key in original envelope, 631 Hiawatha Streamline tender, passenger car, an observation car with a beaver tail and instruction sheet. The set is C7-8. This set appeared in an undated American Flyer Promotional Brochure and as D7903 in the 1936-38 Sommers catalogs. The box is clean and square with no split corners and has nice color graphics.



2239

American Flyer prewar O gauge Rookie tan and green Potomac passenger set no. 1326, circa 1930-31. The set contains the following; 3109 green St. Paul style electric loco with sheet-metal central cab, die-cast hood ends, Rookie tan roof and frame and gold trim, two 3171 Pullmans and a 3172 observation car. The Rookie tan passenger cars have green roofs, gray fixed trucks, brass trim and journals. One die-cast end on the loco has a damaged a spot. The set is C6.



2237

American Flyer prewar O gauge lithographed no. 112 American Flyer Lines steel span bridge with two approach ramps in OB. The bridge is C8. The OB is complete with all flaps with label fully intact.



2240

American Flyer prewar O gauge lithographed passenger set no. 0, circa 1907 in set box with original cardboard inserts. The set contains the following; no. 1 clockwork cast iron 0-4-0 steam loco with green band under the cab windows, 328 four-wheel red tender with black frame and a three window brown Chicago Pullman with black roof and frame. The set is C6-7. The set box shows heavy wear.



2241

American Flyer prewar O gauge scarce earliest freight car no. 242 four-wheel red coal car with black frame, C6-7.



2244

American Flyer prewar O gauge scarce earliest freight car no. 244 red four-wheel wooden oil tank car with maroon frame, circa 1910-12. The frame has paint loss and tank is C5.



2242

American Flyer O gauge scarce earliest freight car no. 240 German-made lithographed crane on top of four-wheel black frame, circa 1910. The crane is C6.



2245

Scarce and desirable American Flyer prewar O gauge clockwork lithographed passenger train set produced by the Edmonds-Metzel Manufacturing Co., circa 1907. The set consists of a no. 1 cast iron clockwork 0-4-0 loco with key, a 328 four-wheel tender with an unpainted frame and a blue Chicago Pullman. The four-wheel passenger car has three windows and side doors unpunched, punched out doors on each end of the car and unpainted frame. This set is one of the first sets produced marking the very beginning of American Flyer Trains in 1907. American Flyer trains began in 1907 as a result of a friendship between William F. Hafner and William O. Coleman Sr. that turned into a business relationship. Coleman funded the production and Hafner provided the manufacturing and marketing. The set is C6-7.



2243

American Flyer prewar O gauge scarce earliest freight car no. 243 red lithographed four-wheel boxcar with wooden green roof, maroon catwalk and black frame, circa 1910-13. The car is lettered American Flyer R.R. and numbered 8965. The wooden roof has a chip on two corners. The car is C6.



2246

American Flyer prewar O gauge olive green lithographed passenger set, circa 1914-17. The set contains the following; no. 12 black cast iron clockwork 0-4-0 steam loco with green stripe under the cab window and key, 120 black American Flyer Line four-wheel tender with white details, 1108 Express Service baggage car and an 1107 coach. The four-wheel cars have orange and yellow details, UNION PACIFIC R.R. above the windows and black frames. This is a very high end condition set. The set is C7-8.



2247

American Flyer prewar O gauge brown lithographed passenger set no. 1307, circa 1922-24 in set box. The set contains the following; 3020 electric 4-4-4 loco with black cast iron frame and yellow windows, 3000 baggage car and two 3001 Columbia Pullmans. The cars have orange window trim, black air tanks and trucks. The set is C7. There are individual OBs for two of the cars which are complete. The set box shows some wear. Both labels are intact.



2250

American Flyer prewar wide gauge one of a kind chrome plated Mayflower passenger set No. 1499 circa 1928 in an original black Salesman suitcase. The suitcase has an American Flyer brass tag which is numbered 153. The suitcase contains a 4689 electric 4-4-4 loco and one car. The complete set contained the following; 4689 electric loco, 4390 Club car, 4391 Pullman, 4393 Annapolis Diner and a 4392 Army-Nave observation car. The 4391 Pullman has six American Flyer plates and no number plates. The loco has the original eagle and two flags. Loco has been rewheeled. The cars have brass trim, PRESIDENTS SPECIAL plates above the windows and brass journals. The cars have trusses except for the diner car which has brass air tanks. Included with the set is a notarized letter verifying the origin of this American Flyer Mayflower train set. The original owner of this set was Victor Cimarusti as compensation from American Flyer for help during the Chicago Worlds Fair. The chrome is bright and shiny and the set is C8. The suitcase is complete with all latches and handle. This is a very unique set and is one of the highlights of the Jerry Poch collection.



2248

American Flyer prewar O gauge Green Diamond Illinois Central streamliner set also known as the Green Diamond outfit No. 1322-RT containing; 9962 power car, three 9954 coach cars and 9955 observation car. The set is C7.



2251

American Flyer prewar wide gauge two no. 2009 dark green cast iron arc light lamp posts in OBs, C7-8. The OBs are complete with labels intact.



2249

American Flyer prewar O gauge scarce orange lithographed four-wheel passenger cars with green roofs lettered DRINK COCA COLA IN BOTTLES PURE AS SUNLIGHT. The cars have green and yellow details and black frames. The cars are C6.



2252

American Flyer prewar wide gauge Pocahontas passenger set no. 1487, circa 1928-31 and 1933 in individual OBs and set box. The set contains the following; 4637 green Shasta St. Paul style electric loco with Rookie tan frame and brass trim, 4340 Club car, 4341 Pullman, 4343 diner with a 4343 observation plate and a 4342 observation car. The Rookie tan passengers have green roofs and flex trucks, brass POCAHONTAS plates above the windows, brass trim and journals and brass air tanks. The cars are missing some hand rails. Set is C7-8. The individual OBs are complete with some staining. The set box has been repaired. The label on the set box is intact.



2253

American Flyer prewar wide gauge St. Paul style 4637 very rare Shasta electric loco painted blue with gray frames and brass trim. The loco is C6.



2256

American Flyer prewar wide gauge no. 4000 New York Central style 4000 maroon 0-4-0 electric loco with orange windows and end doors, brass plates, nickel trim and black frame in OB. The loco is C7-8. The OB is complete with all flaps.



2254

American Flyer prewar wide gauge no. 1477 The Governor red passenger set, circa 1932. This set contained the following; 4672 loco/tender combo with a 4670 cast iron 2-4-2 steam loco with turquoise striping and window trim, brass trim and triangular valve gear, 4671 AFL coal tender with gray fixed trucks, brass trim and journals, 4331 Pullman and 4332 observation car. The cars have brass trim, gray flex trucks and brass journals. The loco and tender are C8 and the cars are C7-8.



2257

American Flyer prewar wide gauge freight cars with Lionel bodies, and black flex trucks, circa 1926 including; 4005 green stock car with a Lionel no. 13 body, 4007 gray Rock Island Lines sand car with a Lionel no. 12 body, 4008 orange CM and StP boxcar with a Lionel no. 14 body and a 4011 maroon NYC and HRRR caboose with a black roof and Lionel no. 17 body. The caboose is C7. The rest of the freight cars are C5-6.



2255

American Flyer prewar wide gauge hard to find no. 110 illuminated Union Pacific Station, circa 1928 made from wood and printed card stock. Included with the station are two original eagles and original brass plate. The station is C6.



2258

American Flyer prewar wide gauge The New Lone Scout lithographed passenger set no. 1480, circa 1930 in individual OBs and set box. The set contains the following; 4683 St. Paul style red 0-4-0 electric loco with gray frame and brass trim and three blue/green passenger cars with red roofs, brass trim, gray flex trucks and brass journals; 4250 club car equipped with a 4122 automatic mail bag catcher, 4251 Pullman and a 4252 observation car. The cars have LONE SCOUT plates above the windows. The set is C7-8. The individual OBs are clean with no split corners. The set box shows wear with some repairs. The label is mostly intact.



2259

American Flyer prewar wide gauge 4010 blue tank car with dark blue frame and platforms, brass trim, gray flex trucks and brass journals, C6-7.



2262

American Flyer prewar wide gauge desirable and hard to find Nationwide Lines uncataloged freight set sold through J. C. Penneys, circa 1929-30. The set contains the following; 4644 red electric 0-4-0 loco with gray frame and brass trim, 4677 green sand car, 4677 Rookie tan boxcar with turquoise blue roof and doors and a 4677 red caboose. The cars have brass trim, gray flex trucks and brass journals. The components in the set all have NATIONWIDE LINES plates. The loco has been rewheeled and is a C6-7. The cars are C7.



2260

American Flyer prewar wide gauge Presidential Special enameled Rolls Royce blue passenger set no. 1489, circa 1928-34 in individual OBs. The set contains a 4689 electric 4-4-4 loco with brass trim, 4390 West Point Club car, 4391 Annapolis Pullman, 4393 Academy Diner and a 4392 Army-Navy observation car. The cars have PRESIDENTS SPECIAL plates above the windows, brass trim, nickel flex trucks and brass journals. The set is C7-8. The individual OBs are complete with no split corners.



2263

American Flyer prewar wide gauge 4696 die-cast loco/tender combination consisting of a 4695 black die-cast brass piper steam 4-4-2 loco with brass and copper trim and blue-green striping and a 4693 AFL Vanderbilt tender with 4694 plates, nickel flex trucks, brass and red plates, brass trim and journals. The loco has been rewheeled. The loco and tender are C7.



2261

American Flyer prewar wide gauge 4220 red wooden bridge. The bridge is 42 inches in length, has two die-cast telegraph poles, two lights on each end and a brass plate on one end of the bridge. The bridge is C6-7.



2264

American Flyer prewar wide gauge 4011 caboose, rare version with five windows on each side. The caboose is yellow with light brown roof, Over 6 Million plate, brass trim and black flex trucks that have brass journals. The caboose is C7.



2265

American Flyer prewar wide gauge brown lithographed The Chief Presidential Special passenger set no. 1456, circa 1927. The set contains a 4677 electric 0-4-0 loco with yellow windows, nickel trim and brass journals, 4080 baggage car missing one door, 4081 Valley Forge Pullman, 4082 Valley Forge observation car. The cars have black flex trucks with brass trim. The baggage car has paint missing on end of the roof. The set is C6.



2266

American Miniature Railway Co. Bridgeport, Conn. prewar O gauge unusual and hard to find lithographed freight set no. 111, circa 1907-1912. The set contains the following; no. 9 black cast iron clockwork 0-4-0 steam loco embossed 200 under the cab windows, no. 20 W.S.E. no. 20 black and red four-wheel tender, two yellow/red gravel cars and a no. 90 yellow/red caboose car with red roof. The four-wheel cars have black frames with red spring details.



2267

American Miniature Railway Co. Bridgeport, Conn. prewar O gauge unusual and hard to find no. 54 lithographed black and gold four-wheel gravel car with black frame that has red spring details, circa 1907-12, C6.



2268

American Miniature Railway Co. Bridgeport, Conn. prewar O gauge unusual and hard to find no. 54 lithographed brown and gold four-wheel gravel car with black frame that has red spring details, circa 1907-12, C6.



2269

American Miniature Railway Co. Bridgeport, Conn. prewar O gauge unusual and hard to find no. 121 lithographed train station with cast iron chimney, window and door frames, circa 1907-12. The station measures 13 1/2 inches by 9 3/4 inches. The station is C6-7



2270

Ives prewar O gauge rare earliest, top of the line hand painted passenger set no. 12, circa 1901-02 in rare red set box with original cardboard trays. This is a complete and matched set that contains the following; no. 11 black cast iron clockwork steam loco with original key, cast bands, red, gold and silver painted trim, no. 4 four-wheel black tender with bunker, cast iron wheels and red and gold painted trim, 50 baggage car, two no. 51 coaches, damaged catalog, six wire banded curve track sections and six wire banded straight track sections. The four-wheel passenger cars are green painted with white and red painted trim and cast-iron wheels painted red. The loco is C6-7 and the tender is C6. The cars are C5. The box has an original label pasted on the inside of the lid which is fully intact. Both labels on the outside of the box are mostly intact.



2271

Ives prewar O gauge first version of the 801 four-wheel lithographed clockwork trolley using a No. 52 green Buffalo parlor car body with a red frame and a mustard colored roof. The sides have LIMITED VESTIBULE EXPRESS above the windows. The trolley is C6.



2274

Ives prewar O gauge lithographed translucent white Limited Vestibule Express passenger set no. 3, circa 1907-08. The set contains the following; no. 3 black cast iron clockwork steam loco, no. 1 F.E. tender lithographed with black and red with red lithographed spring details and cross hatched floor on the front of the tender, no. 50 baggage, 51 Brooklyn chair car and a 52 Buffalo parlor car. The four-wheel passenger cars have black roofs and the frames that have red lithographed spring details. The set is C6.



2272

Ives prewar O gauge red lithographed passenger set containing a no. 0 black clockwork steam loco with red, black and gold striping on the cab roof, four-wheel no. 1 F.E. red and black tender with red spring details on the frame and cross hatching on the floor and a four-wheel no. 51 tri-color Fast Express Mohawk chair car with black roof, lithographed vestibules and red spring detail on the frame. The car is numbered No. 1. The set is C6-7.



2275

Ives prewar O gauge no. 25 black cast iron clockwork 4-4-0 steam loco with red and gold trim and a no. 25 L.V.E. four-wheel black and red tender with red spring detail on the frame and cross hatched floor and frame section. The loco and tender are C6.



2273

Ives prewar O gauge 140 lithographed crossing gate, circa 1906-08 for clockwork only. The crossing gate has a crossing shanty with cast iron door frame, C6-7.



2276

Ives prewar O gauge no. 128 lithographed gravel car with eight-wheel inboard trucks, circa 1906-07, C5-6.



2277

Ives prewar O gauge no. 127 yellow lithographed live stock car with eight-wheel inboard trucks, circa 1906-09. The car has a lithographed red and black roof. The car is C5-6.



2280

Ives prewar O gauge yellow lithographed Limited Vestibule Express passenger set no. 24R, circa 1904-06. The set contains the following; no. 25 black cast iron clockwork 4-4-0 steam loco with rods fasten to the brake shoes, no. 25 four-wheel red and black lithographed L.V.E. tender with cross hatched floor and spring detail on the frame, 131 Chicago baggage car, 130 Buffet/New York Baggage combo car and a 129 Philadelphia parlor car. The cars have eight-wheel inboard trucks, black frames, black and red roofs with silver clerestories and LIMITED VESTIBULE EXPRESS above the windows. The set is C6.



2278

Ives prewar O gauge no. 125 yellow lithographed Fast Freight Line Merchandise car with eight-wheel inboard trucks, circa 1904-1909. The car has red and black roof. The car is C5.



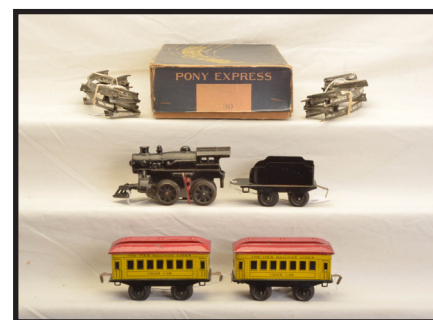
2281

Ives prewar O gauge no. 130 scarce pale yellow Philadelphia parlor car with eight-wheel inboard trucks, black and red roof with silver clerestory and LIMITED VESTIBULE EXPRESS. The car is C6.



2279

Ives prewar O gauge no. 126 four-wheel buff lithographed Fast Freight Caboose, circa 1906-09 with original doors, red and black striped roof and hatched frame with red spring detail. The caboose is C6.



2282

Ives prewar O gauge lithographed Pony Express passenger set no. 30 in blue set box that has one cardboard insert. The set contains the following; no. 10 black cast iron clockwork 0-4-0 steam loco with key, no. 11 four-wheel black tender, two no. 51 yellow Chair Cars with red roofs and black frames and six curve track sections. The set is C7. The box lid has repairs and has nice color graphics.



2283

Ives prewar 115 lithographed freight station with butterscotch striped walls, raised platform, ramp and one riveted Freight Station signs one on the front and one on the back. gray diamond patterned roof, diamond patterned doors, red octagonal base floor and cast iron chimney top. The station is C6-7.



2286

Ives prewar O gauge lithographed Traders Fast Freight set no. 572FX, circa 1930 in individual OBs and set box. The set contains the following; 1125 blue 0-4-0 cast iron steam loco with bold trim, no. 12 four-wheel Ives Railway Lines tender, 563 gray/orange/brown New York Central sand car, 564 red Rock Island boxcar, 567 red caboose with yellow windows and turquoise cupola, set of four no. 1571 telegraph posts and 1574 clock in individual OB and an original cardboard tunnel which is actually the bottom of the set box. The set is C7. The individual OBs have most all flaps attached. The set box has no split corners and both labels are intact.

The Tunnel section of the set box has been repaired.



2284

Ives prewar O gauge yellow lithographed Limited Vestibule Express passenger set in a worn set box. The set contains the following; 1117 black cast iron electric loco with red and gold trim, four-wheel L.V.E. no. 11 black and red tender with green frame, no. 60 baggage car with black frame, 61 Yale coach with green frame and a no. 62 Harvard Parlor car with green frame. The eight-wheel cars have red and white details, gray and red roofs. The loco and tender are C7-8. The Yale car is C6. The Harvard and baggage car are C6-7.



2287

Ives prewar no. 115 lithographed freight station, version with no doors or ramp in OB. The station has a vertically-laid brick platform, wood siding, blue-green and brown roof and no plates, C7-8. The box is complete and label is intact.



2288

Ives prewar floor toy train lithographed passenger set. The set contains the following; black cast iron steam loco with gold trim, solid red front wheels and orange spoked wheels in the back, four-wheel red and black F.E. No. 1 tender, no. 50 red United States Mail Esp. Service baggage car with gray roof, no. 151 off-white Brooklyn coach with red and black details and dark green roof and a no. 52 dark green buffalo coach with gold details and gray roof. The four-wheel cars and tender all have green frames. The cars have LIMITED VESTIBULE EXPRESS above the windows and the baggage has LIMITED VESTIBULE EXPRESS on the sides of the car. The set is C7-8.



2285

Ives prewar O gauge no. 800 clockwork lithographed yellow trolley, circa 1910 with original key, black and red trim, gray roof and trolley pole. The LOCAL SUBURBAN SERVICE appears above the windows and TROLLEY appears below the windows. The trolley car is C6-7.



2289

Ives prewar 350 die-cast traffic signal with Mojave base, ivory box and orange signal head, circa 1929-30. The signal is stamped 87 on the underside. The base on the signal is starting to deteriorate, C5. The rest of the signal is solid and intact, C7.



2292

Ives prewar O gauge no. 51 green lithographed Limited Vestibule Express Iroquois coach with a black roof, circa 1906-08. The four-wheel car has red and black striped vestibules, hatched frame and red lithographed spring detail on the frame. The car is C6-7.



2290

Ives prewar O gauge desirable maroon/brown Wanamaker Railway Lines passenger set no. 504, circa 1924 including; 3253 electric loco with gold rubber-stamped Wanamaker Railway Lines, 129 Sarasota Pullman, 130 Buffet and a 132 observation. The eight-wheel illuminated passenger cars have gold Wanamaker Railway Lines rubber-stamped above the car windows. The set is C6-7.



2293

Ives prewar O gauge four-wheel blue lithographed no. 51 Iroquois Limited Vestibule Express coach with black roof, red and black striped vestibules, hatched frame and red lithographed spring detail on the frame, circa 1905. The car is C6-7.



2291

Ives prewar O gauge four-wheel lithographed no. 51 orange Fast Express Mohawk chair car with black roof and details, red and black lithographed vestibules and red spring detail and cross hatching on the frame, circa 1902-05. The car is numbered No. 1. The car is C6-7.



2294

Ives prewar O gauge four-wheel reddish-brown lithographed no. 51 Iroquois Limited Vestibule Express coach with black roof, red and black striped vestibules, hatched frame and red lithographed spring detail on the frame, circa 1905. The car is C6-7.



2295

Ives prewar O gauge lithographed passenger set no. 12, circa 1908-09. The set contains the following; no. 11 black cast iron clockwork 0-4-0 steam loco with red and gold trim, no. 11 four-wheel lithographed L.V.E. tender with cross hatching on the tender floor and frame and red spring details, no. 60 dark blue United States Mail Exp. Service LVE baggage car, no. 61 red Empress coach and a no. 62 red Princess Parlor car. The four-wheel passenger cars have black roofs with silver clerestories, cross hatched frames with red spring details. The loco is C7 and the rest of the set is C6.



2298

Ives prewar O gauge lithographed passenger set no. 41, circa 1929 in individual OBs and set box. The set contains the following; no. 1 black cast iron clockwork loco with key, no. 11 four-wheel black tender silver lettered Ives N.Y.C. and H.R., no. 50 yellow baggage car with black details and roof, a no. 51 yellow chair car with black details and red roof and eight curve track sections. The four-wheel cars have THE IVES RAILWAY LINES above the windows. The loco and cars are C7-8 and the tender is C8. The set box lid has two detached sides which are included. The individual boxes have some detached flaps which are included. The track boxes are missing all end flaps and are damaged.



2296

Ives prewar O gauge early no. 107 single semaphore with track, circa 1908-1910. Semaphore is C7.



2299

Ives prewar O gauge no. 600 single dark green lamp post and a no. 601 double dark green lamp post. The lamp posts are C6.



2297

Ives prewar O gauge no. 3 tin blue lithographed 2-2-0 steam loco with early lithographed roof and gold trim and black stack, circa 1902-04 in OB and a four-wheel black and red lithographed F.E. no. 1 tender with red lithographed spring detail on the frame. The loco and tender are C6. The box has label fully intact.



2300

Ives prewar O gauge prototype yellow flatcar with green trim, two ramps, two red wagons with original cloth Circus tents and no journals, circa 1924. This exact car is pictured on the Ives web site. Ives never cataloged or produced an O gauge Circus set, C6-7. Jerry Poch had this prototype car on display to make up a Circus set with the items listed in the next lot no. 2301.



2301

Ives prewar O gauge loco and cars that Jerry Poch had on display with the prototype flatcar to make up a Circus set that is listed in previous lot no. 2300. Ives never produced or cataloged an O gauge Circus Set. The items are as follows; 1122 red die-cast 4-4-2 steam loco with gold boiler front, smoke stack, painted wheels, brass and copper trim, no. 25 eight-wheel red die-cast The Ives Railway Lines tender with brass trim and journals, 127 yellow N.Y.C. and H.R. Live Stock Transportation car with orange doors, red roof and brass journals and a 136 red observation car with black roof, light on the roof above the observation deck, brass PULLMAN plates above the windows and brass journals. The loco and cars were produced in 1930. The die-casting on the loco and tender are solid and intact. The loco and cars C6-7.



2302

Ives prewar O gauge Southern Special orange and black passenger set no. 482, circa 1929 in individual OBs and set box. The set contains the following; 3261 black electric 0-4-0 loco with orange die-cast frame and brass trim, two 133 Parlor cars and 134 observation car. The eight-wheel orange passenger cars have black roofs, brass trim, plates and journals. The die-cast frame on the loco is solid and intact. The set is C7. The individual OBs have most flaps attached. There is one empty 4-OC3 track box included. The set box has three repaired corners.



2303

Ives prewar O gauge no. 54 four-wheel lithographed gravel car, circa 1908-09 with lithography on the ends of the frame, vertical cherry red and white striping and red lithographed spring detail on the frame. The car is C7-8.



2304

Ives prewar O gauge very rare no. 54 four-wheel cream lithographed gravel car with red lithographed spring detail on the frame. The gravel car is longer than a standard no. 54 gravel car and measures 4 1/2 inches long. One coupler is broken off. The car is C6-7. This is the exact same gondola pictured on the Ives website and is the only one known.



2305

Ives prewar O gauge FAO Schwartz dark green lithographed passenger set, circa 1915. The set contains the following; 1125 black cast iron 4-4-0 steam loco with F.A.O.S. stamped under the cab windows and gold and brass trim, no. 25 eight-wheel Limited Vestibule Express tender, 131 Baggage-Express car with gray and cream roof, no. 130 Buffet car with cream and gray roof and a 129 Saratoga coach with gray and cream roof. The eight-wheel cars have black trucks and no journals and LIMITED VESTIBULE EXPRESS above the windows. The loco and tender are C6-7. The cars are C5.



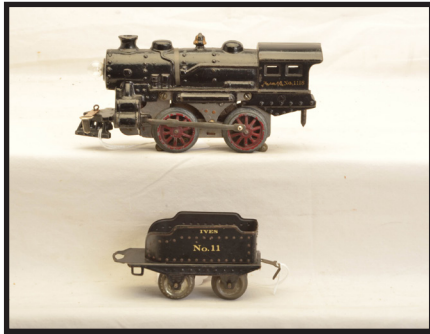
2306

Ives prewar O gauge no. 124 white lithographed Merchants Despatch Transportation Company Refrigerator Dairy Line Express car with white lithographed roof and blue catwalk, circa 1910-11. Also included is a 127 lithographed red and gray Live Stock Transportation car with white lithographed roof and blue catwalk, circa 1912-14. The 124 refrigerator car is C7 and the 127 stock car is C6-7.



2307

Ives prewar floor toy lithographed freight set containing the following; no. 17 cast iron black steam loco and a four-wheel L.V.E. no. 11 red and black tender with green frame, 163 cream gondola with gray edge trim and green frame, no. 64 cream Fast Freight Line General Merchandise Car with white roof and dark green frame and a 126 cream Fast Freight caboose with green roof and gray frame. The merchandise car and caboose are the versions with no doors. The set is C5.



2308

Ives prewar O gauge very scarce no. 1118 Wanamaker black cast iron 0-4-0 electric steam loco, circa 1924 with a four-wheel no. 11 Ives tender. The loco is marked Wanamaker no. 1118 under the cab windows on each side. The loco and tender are C6.



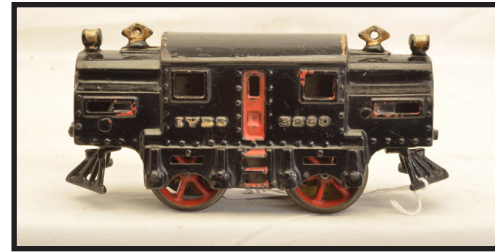
2309

Ives prewar O gauge scarce no. 51 four-wheel chestnut brown Wanamaker chair car with a maroon roof, circa 1924. The car has yellow details and WANAMAKER RAILWAY LINES above the windows. The car is C7.



2310

Ives prewar O gauge Montgomery Wards uncataloged passenger set, circa 1907-09 in set box with original cardboard dividers. The set contains the following; 25 black cast iron clockwork 4-4-0 steam loco with original key, red and gold trim and four boiler bands, no. 25 four-wheel black lithographed ultra rare Chicago Flyer tender with red and yellow trim, cross hatched floor, hatched frame with red spring detail on the frame, an eight-wheel no. 130 lithographed Limited Vestibule Express New York Buffet/Baggage car with yellow walls, orange and black trim, black roof and silver clerestory with red trim, six curve track sections, four straight track sections and track clips. The Chicago Flyer tender is unique to Montgomery Wards uncataloged sets. This set was featured in an article written in the December, 2021 issue of Ties magazine. The bottom of the tender has spot of solder on the underside. The condition of this set is incredible and except for a few minor nicks is C8. The box lid has two repaired corners and label is intact.



2311

Ives prewar O gauge no. 3200 black cast iron 0-4-0 electric loco with gold and red trim and raised lettering, circa 1911-13. The loco is C7-8.



2312

Ives prewar O gauge outfit red lithographed passenger set no. 1115X, circa 1911. The set contains the following; 3218 electric 0-4-0 locomotive, with gold trim, raised lettering and six-spoked wheels, 60 Express Service Baggage with Limited Vestibule Express above the doors, 61 Yale passenger and a 62 Harvard Parlor. The no. 61 and 62 cars have THE IVES RAILWAY LINES above the windows. The eight-wheel passenger cars have T trucks, yellow and brown details, dark olive green frames and gray and cream roofs. The set is C7.



2313

Ives prewar 333 Danger Railroad Crossing banjo signal with dark green cast iron base, white pole and face, C7.



2316

Ives prewar O gauge no. 125 unusual eight-wheel yellow lithographed Fast Freight Merchandise car, circa 1904-06, with green roof and T-type trucks. The car is missing the brake wheel. The car is C5.



2314

Ives prewar O gauge lithographed passenger set no. 4, circa 1908-09. The set contains the following; no. 4 black cast iron clockwork steam loco with red and gold trim, four-wheel F.E. no. 1 black and red tender, red spring details on the frame and cross hatching on the floor, no. 50 iridescent white United States Mail Baggage with black details and roof and a no. 51 iridescent green Brooklyn passenger car with red details and black roof. The four-wheel cars have red spring details. The set is C7.



2317

Ives prewar O gauge no. 126 unusual four-wheel yellow lithographed Fast Freight Caboose, circa 1904-09 missing one doors, red and black striped roof and cross hatched frame with red spring detail. The caboose is C5.



2315

Ives prewar O gauge no. 128 unusual eight-wheel yellow lithographed gravel car with two brake wheels and T-type trucks circa 1904-05. One of the brake wheels is missing the wheel part. The car is C5.



2318

Ives prewar O gauge green lithographed Limited Vestibule Express passenger set no. 1115, circa 1913-16. The set contains the following; 1125 black cast iron 4-4-0 steam loco with red and gold trim, no. 25 eight-wheel Limited Vestibule Express tender with dark green frame and blue interior, 131 baggage-express car with an orange and cream roof, 130 Buffet and a 129 Sarasota. The eight-wheel cars have orange details and T-type trucks. The 130 and 129 cars have orange and green roofs. The set is C7.



2319

Ives prewar no. 251 Colonial house with terra cotta base, white walls and dormers, peacock roof and a lithographed brick chimney, circa 1929-30. This house is the same version as a Lionel 189 Villa. There is a MADE IN THE IVES SHOPS is stamped on the underside of the house. The house is C5.



2322

Ives prewar O gauge yellow lithographed Pennsylvania Lines passenger set no. 1105, circa 1910. The set contains the following; 1100 1st series black cast iron 0-4-0 electric steam loco with red and gold trim, no. 1 four-wheel red and black F.E. tender with a gray frame, no. 50 baggage, no. 51 Newark coach and a no. 52 Washington coach. The four-wheel cars have orange and brown details, gray roofs and frames. The 52 Washington car is C5 and the rest of the set is C6.



2320

Ives prewar O gauge lithographed freight set no. 485R, circa 1929 in individual OBs and set box. The set contains the following; 1122R die-cast black 4-4-2 steam loco with brass and copper trim, original cardboard insert and wrap, no. 25 die-cast The Ives Railway Lines tender with brass trim and journals, 125 white and gray Union Line Merchandise car with red roof, 128 gray and orange N.Y.C. & H.R. gravel car and a 121 red caboose with a gray cupola roof and brass trim has an American Flyer body. The eight-wheel cars have brass journals. The die-casting on the loco and tender are solid and straight. The set is C7-8. The individual OBs have most flaps attached. The set box has three split corners on the lid.



2323

Ives prewar O gauge eight-wheel no. 37158 white CB and Q Burlington Route refrigerator car with red roof, C6.



2321

Ives prewar O gauge unique three eight-wheel white Sunlight Dairy cars which are stamped Sunlight Creamery Butter and Sunlight Special with gray roofs, circa 1924. Two of the cars are numbered 17524 and one is numbered 17525. According to Lou Hertz, only three of these cars were ever made. The cars are stamped with the unique sunburst. One of the 17524 cars is C6 and the other two cars are C7. Also included with the cars is the original Sunlight stamp with sunburst.



2324

Ives prewar O gauge eight-wheel no. 118658 orange Chicago and Northwestern RY. automobile car with gray roof, C7-8.



2325

Ives prewar 1 gauge scarce and desirable mechanical lithographed passenger set no. 44, circa 1910-11. The set contains the following; no. 40 black 2nd series cast iron clockwork steam 4-4-0 loco with nickel, gold and red trim and red name plate under the cab windows, no. 40 T.C.L.E. tender with gold and red trim, 70 New York and Chicago baggage and express car, 71 New York and Chicago Buffet/ baggage combine and a 72 Chicago parlor car. The passenger cars are the high-sided versions. The white cars have white and red roofs and red and yellow details. The baggage car is lettered NEW YORK CENTRAL LINES above the windows and the other two cars are lettered TWENTIETH CENTURY LIMITED above the windows. The loco and tender are C7 and the cars are C6.



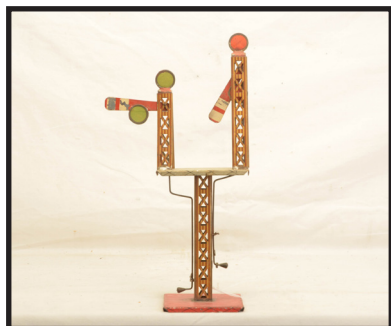
2328

Ives prewar 1 gauge no. 3240 black cast iron 0-4-4-0 electric loco with red and gold trim. The loco is C6-7.



2329

Ives prewar O or 1 gauge desirable early 122 lithographed station with glass domed platform which consists of a 116 lithographed Grand Central Station with a V-shaped bay and a 121 platform with one bench. The station has cast iron window and door frames and chimney tops. The dome consists of 32 glass panels. The station and platform is C7.



2326

Ives prewar O or 1 gauge 109 lithographed manually operated double arm semaphore with red diamond base, butterscotch open girder supports and gray diamond upper platform. The semaphore has repairs and is C6



2330

Ives prewar 1 gauge white lithographed mechanical passenger set no. 49, circa 1913-14. The set contains the following; no. 40 black clockwork cast iron 4-4-0 steam loco with red, gold and nickel trim, no. 40 black tender, no. 70 New York and Chicago baggage car, no. 71 New York and Chicago Buffet/ Baggage car and a no. 72 Chicago Parlor car. The passenger cars are the low sided version. The eight-wheel white wood passenger cars have yellow doors, red and gold details and gray and red roofs. The loco and tender are C6-7 and the cars are C6.



2327

Ives prewar 1 gauge lithographed passenger set no. 1130X, circa 1915-16 The set contains the following; 3239 black cast iron 0-4-0 electric loco with silver stampings and red trim, no. 71 New York and Chicago Buffet/Baggage car, no. 72 Washington Pullman and a no. 73 observation car. The passenger cars are the high-sided versions. The brown cars have red, green gold and yellow details, d green and dark green roofs and THE IVES RAILWAY LINES above the windows. The set is C7-8.



2331

Ives prewar O or 1 gauge no. 114 lithographed Ticket Office Station with cast iron window and door frames and chimney top. The Station has R.R. Station on each end, TICKET OFFICE on one side and TELEGRAPH OFFICE on the other side. The station has gray and red octagonal patterned base, yellow and green vertical wood boards and red diamond roof. The station is C7.



2334

Ives prewar 1 gauge 1st series no. 40 cast iron mechanical steam 4-4-0 loco with nickel trim, gold and red trim and red name plate under the cab windows and an. eight-wheel no. 40 lithographed T.C.L.E. tender with gold and red trim, circa 1904-09. The loco and tender are C7-8.



2332

Ives prewar 1 gauge very scarce F.A.O. Schwartz special no. 1129 black cast iron 2-4-2 steam loco with F.A.O.S. under the cab windows with a no. 40 eight-wheel no. 40 Ives N.Y.R.R. tender. The loco is missing the bell. Loco and tender are C7.



2335

Ives prewar 1 gauge scarce and desirable no. 70 dark red lithographed high sided baggage and express car with black roof, silver clerestory and TWENTIETH CENTURY LIMITED EXPRESS above the windows. The inside of frame floor has black and red lithographed striping. The car is C7.



2333

Ives prewar O or 1 gauge early 113 lithographed passenger station, circa 1906-09 with lithographed red brick walls, cast iron window frames, door frames and chimney top, gray diamond pattern on roof and yellow and green octagonal pattern on the base floor. The station is lettered TICKET OFFICE on one side and TELEGRAPH OFFICE on the other side. The station is C5-6.



2336

Ives prewar 1 gauge no. 71 dark red lithographed high sided baggage/St. Louis combo car with black roof, silver clerestory, and TWENTIETH CENTURY LIMITED EXPRESS above the windows. The car is C6.



2337

Ives prewar 1 gauge no. 72 dark red lithographed high sided San Francisco Parlor car with black roof, silver clerestory, and TWENTIETH CENTURY LIMITED EXPRESS above the windows. The car is missing one coupler and is C7.



2340

Ives prewar 1 gauge no. 40 black 1st series cast iron mechanical 4-4-0 steam loco with nickel, red and gold trim and plate under the cab windows and a no. 40 eight-wheel T.C.L.E. tender with red and gold trim. The loco and tender are C6-7.



2338

Ives prewar 1 gauge no. 3239 gray cast iron 0-4-4-0 electric loco with silver stampings, red and nickel trim, circa 1917-20, C7-8.



2341

Ives prewar 1 gauge scarce no. 76 green lithographed Fast Freight gravel car with black frame. The car has no brake wheels. The black trucks have red trim. The car is C6.



2339

Ives prewar O or 1 gauge early lithographed no. 117 Suburban station covered platform, circa 1903-05 with tabbed sign on roof and simulated ironwork on the roof edge. Each platform side has four original wooden posts and one dark green bench. One side of the platform is bent in. The platform is C6.



2342

Ives prewar 1 gauge scarce no. 74 green lithographed Live Stock Transportation stock car with black frame. The car has one brake wheel and cream doors. The black trucks have red trim. The car is C6.



2343

Ives prewar 1 gauge scarce no. 73 green lithographed Fast Freight Line General Merchandise Car with black frame, red and black striped roof and green door. The car has one brake wheel missing the top wheel part. The black trucks have red trim. The car is C6.



2346

Ives prewar O or 1 gauge gauge desirable early 122 lithographed station with glass domed platform which consists of a 116 lithographed Grand Central Station with a V-shaped bay and a 121 platform with one bench. The station has cast iron window and door frames and chimney tops. The dome consists of 12 glass panels, six clean and six green. The station with platform is C6-7.



2344

Ives prewar 1 gauge scarce no. 75 green lithographed Fast Freight Line caboose with black frame and a red and black striped cupola. The black trucks have red trim. The car is C6.



2347

Ives prewar 1 gauge no. 41 black mechanical 0-4-0 cast iron steam loco with gold and red trim, circa 1908-11 and an eight-wheel no. 40 T.C.L.E. tender with red and gold trim. The loco and tender are C7.



2345

Ives prewar 1 gauge scarce no. 73 white lithographed Fast Freight Line General Merchandise Car with black frame, red and black striped roof, one replaced white door and one cream door. The car has one brake wheel. The black trucks have red trim. The car is C6.



2348

Ives prewar 1 gauge 7345 yellow merchandise car with dark red roof. The car is lettered VENTILATOR AND REFRIGERATOR to the left of the door and has a Santa Fe herald with S.F.R.D. 7345 to the right of the door. The car has spring latch doors and black trucks. The car is C6-7.



2349

Ives prewar 1 gauge 7446 brown Live Stock car lettered P.R.R. on frame. Car is C7.



2352

Ives prewar wide gauge 1865 double blade semaphore with red base, black pole, brass ladder, double blades, Ives tag and wire in OB. This is a Lionel production of an Ives 301 double semaphore. The semaphore is C7. The OB is complete but has one split corner.



2350

Desirable Ives prewar wide gauge Prosperity Special passenger set no. 1000R, circa 1929. The set consists of the following; 1134R die-cast steam loco, 40 die-cast The Ives Railway Lines tender with brass plates, nickel trucks, copper wheels and brass journals, 241 Club, 242 Parlor, 243 observation car. The loco and tender are copper plated with brass and nickel trim. The cars are American Flyer bodied with IVES brass plates, nickel trim, roofs and side trucks, copper wheels and brass journals. The loco has been rewheeled. The die-casting is solid and intact and loco is C7. The tender body is warped, however is still intact, C6. The passenger cars are C7. The Prosperity Special is a very important train and was a top of the line set produced by Ives.



2353

Ives prewar wide gauge olive green passenger set no. 690, circa 1924 in original set box that has original cardboard dividers. The set contains the following; 3235 electric loco with black cast iron frame, maroon windows and gold rubber-stamping, 171 Buffet car, 173 observation car, eight curve track sections and two straight track sections, no. 204 100-watts transformer, rheostat and a How to operate your Ives Railway System booklet. This is a clean matched original set, C7-8. The set box has four repaired corners on the lid.



2351

Ives prewar wide gauge 1864 single semaphore with dark red cast iron base, black pole and brass ladder in OB. This is a Lionel production of an Ives 300 single semaphore. The semaphore is C7. The box is complete with two split corners.



2354

Ives prewar wide gauge very scarce no. 254 power house with two brass plates that read IVES POWER HOUSE, circa 1929. This was a 436 Lionel power station painted cardinal red with gray base, yellow windows, cardinal red skylight, black cornice, chimney, window and door frames. The station is C6.



2355

Ives prewar wide gauge 349/1880 flashing crossing signal with red cast iron base, white pole, gold cross arm, brass cross buck and finial, circa 1929. This signal was produced using a Lionel no. 79 signal body, C7.



2358

Ives prewar wide gauge maroon passenger set no. 703 in set box with original cardboard dividers and tray. The set contains the following; 3242 N.Y.C. and H.R. electric 0-4-0 loco with a black cast iron frame, nickel trim and gold rubber stamping, 187 Buffet car, 188 Parlor car, a 189 observation car, eight curve track sections, four straight track sections, rheostat and track clips. The cars have gold rubber-stamping and THE IVES RAILWAY LINES above the windows. The set is C6-7. The set box lid has repaired corners and label is fully intact.



2356

Fantastic Ives prewar wide gauge freight set no. 1085, circa 1929 in individual OBs and set box. This set contains the following; a 1134 black die-cast 4-4-2 steam loco with brass trim, original cardboard insert, double boxed in brown OB and regular color OB, 40 die-cast The Ives Railway Lines tender with brass trim and journals, original cardboard wrap and insert, 20-192 yellow merchandise car blue-green roof, 20-198 black gravel car, a 20-195 dark red caboose with maroon roof and blue-green cupola, two boxes of 4-2C3 curve track sections, rheostat and a kit box ONLY. The freight cars have American Flyer bodies mounted on black Ives trucks. The cars have all brass trim and journals. The die-casting on the loco and tender are solid and intact. The headlight bracket support is cracked. The loco has been rewheeled. The set is C7-8. The individual OBs are clean with most all flaps attached. The set box has one split corner.



2359

Ives prewar wide gauge no. 87 with dark green cast iron base, white pole and original flag in a damaged box with a label marked no. 89 which is the Lionel number and has Ives Mfg. Corp. on label. The flag pole is C6-7.



2357

Ives prewar no. 201 lithographed power house with single transformer, C7.



2360

Ives prewar wide gauge Irvington production two-tone green passenger set no. 1731E, circa 1932 using Lionel bodies in individual OBs. The set contains the following; 10 peacock electric loco with brass and nickel trim, 332 baggage, 339 Pullman and a 341 observation car. The peacock cars have dark green roofs and orange inserts, THE IVES RAILWAY LINE decals above the windows and nickel journals. The cars all have original Ives paper labels on the underside. The paint and trim on this set is very bright and clean. Set is C8. The engine box is missing two interior flaps. The other boxes have all flaps attached.



2361

Ives prewar wide gauge no. 1875 Irvington Production of a 155 Lionel freight shed. The station has cream base, terra cotta floor, pea green posts, maroon roof with cream underside, brass plates and finials, C7.



2362

Ives prewar wide gauge tan passenger set no. 705R, circa 1924-25 in set box. The set contains the following; 1132R cast iron 0-4-0 steam loco with red and brass trim and IVES 1132R under the cab windows, no. 40 Ives N.Y.C. and H.R. tender with brass journals, 184 Club car, 185 Parlor car and a 186 observation car. The cars have brass plates, black trucks and brass journals. All of the cars have brass PULLMAN plates above the windows. The set is C6. The set box has original cardboard dividers and tray. The lid has split corners with repairs.



2363

Ives prewar wide gauge very rare promotional 190 dark green Tomato Soup tank car with two spouts and brass journals, circa 1928. This car featured in a 1929 IVES MINIATURE RAILWAY NEWS in an article called Diner is Served Via Ives Trains. The article documented a special diner held for the sons of railroad engineers where 12 boys were seated at a big table with track running from the kitchen to an oval of track around the table. According to the article there were 12 of these tank cars that obviously had to be specially painted and fitted with a working valve. This is the exact car that is shown on the Ives web site. The cap is missing on the tank dome. The car is C7-8. This car was purchased from a relative of an Ives employee by Jerry Blaine, a California collector.



2364

Ives prewar wide gauge very rare promotional 190 dark green Tomato Soup tank car with brass journals, circa 1928. This car featured in a 1929 IVES MINIATURE RAILWAY NEWS in an article called Diner is Served Via Ives Trains. The article documented a special diner held for the sons of railroad engineers where 12 boys were seated at a big table with track running from the kitchen to an oval of track around the table. According to the article there were 12 of these tank cars that obviously had to be specially painted. This is the exact car that is shown on the Ives web site. The car is C7-8. This car was purchased from a relative of an Ives employee by Jerry Blaine, a California collector.



2365

Ives prewar wide gauge very rare promotional 192 orange Ice Cream car with brown roof and brass journals, circa 1928. This car featured in a 1929 IVES MINIATURE RAILWAY NEWS in an article called Diner is Served Via Ives Trains. The article documented a special diner held for the sons of railroad engineers where 12 boys were seated at a big table with track running from the kitchen to an oval of track around the table. The car is C7-8. This car was purchased from a relative of an Ives employee by Jerry Blaine, a California collector.



2366

Ives prewar wide gauge rare prototype no. 196 orange flatcar with a crane boom with chain mounted on the base of the car. The car has brass journals and is missing both couplers. The car is C7. This car was purchased from a relative of an Ives employee by Jerry Blaine, a California collector.



2367

Ives prewar wide gauge very rare light green Northern Limited passenger set no. 1087R, circa 1929. The set contains the following; 3237R electric 0-4-0 loco with brass trim, 244 club car, 245 Parlor car and a 246 observation car. The cars were produced using American Flyer bodies. The cars have brass THE IVES RAILWAY LINES plates above the windows, brass trim and journals. The loco has been rewheeled. The set is C6.



2370

Ives prewar wide gauge desirable and scarce Wanamaker Railway Lines mahogany brown passenger set, circa 1924 in set box numbered 713 and marked Wanamaker Railway Lines New York and Philadelphia. The set contains the following; 3243 electric 4-4-4 loco with nickel trim and cast iron frame, 187-3 Buffet car that is missing one set of steps, 188-3 Parlor car that is missing one set of steps and a 189-3 observation car that is missing three sets of steps. The engine and cars are all stamped Wanamaker Railway Lines. The set is C6-7. The set box has some repairs with gray tape. The set box has original cardboard dividers.



2368

Ives prewar wide gauge Bridgeport production 199 derrick car with peacock blue cab, dark green roof, red boom and window inserts, three brass knobs and plates and nickel journals, circa 1930. Ives sold these cars using a Lionel 219 derrick car body with Lionel 200-series trucks and couplers. The car is C6-7.



2371

Ives prewar O or wide gauge 332 railroad crossing warning bell signal version with bell mechanism mounted in the center of the diamond, circa 1928-29. The signal has a maroon cast iron base and brass cross buck with black lettering. The signal is C7.



2369

Ives prewar wide gauge no. 230-3 station with green base, yellow walls, gray cornices, window and door frames, red windows, doors, roof and chimney and one exterior light on each side above the doors. This station was modeled after the 124 Lionel Station. The station is C5.



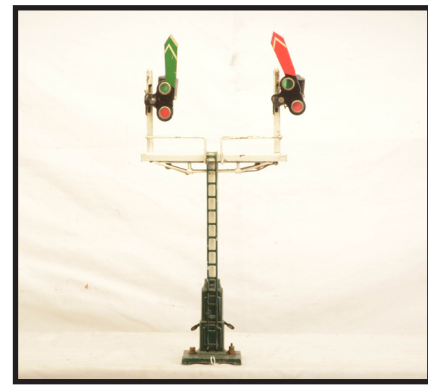
2372

Ives prewar O or wide gauge 332 railroad crossing warning bell signal version with bell mechanism mounted in the middle of the cross buck and bell dome extended below the cross buck, circa 1930. The signal has a maroon cast iron base and brass cross buck with black lettering. The signal is C7.



2373

Ives prewar wide gauge brown passenger set no. 692R, circa 1926. The set contains the following; 3236R electric 0-4-0 loco with brass trim, cast iron frame and gold painted window frames, 184 Club car, 185 Parlor car and a 186 observation car. The cars have brass plates and journals. The set is C7.



2376

Ives prewar wide gauge no. 302 double arm semaphore with dark green cast iron base and ladder and a white pole, C7.



2374

Ives prewar wide gauge 334 crossing gate with orange and green speckled shack. The crossing gate is Lionel production and has a maroon base and green and white gate. The crossing gate is C7-8. The box has label intact and lid has one split corner.



2377

Fantastic Ives prewar wide gauge 3242R maroon Wanamaker Railway Lines electric loco with black cast iron frame, nickel trim, gold rubber-stamping and orange painted window frames in scarce OB, circa 1924. The condition of this electric loco is incredible. The paint is bright and clean and the rubber stampings are very strong. This is the finest example of this engine that we have ever seen or sold. The loco is C8-9. The loco OB is complete with no split corners, however the top lid has a hole and the bottom has a split. Do not miss this opportunity to own this incredible example of an Ives Wanamaker loco.



2375

Ives prewar wide gauge extremely rare no. 1070 Circus Set first year produced, circa 1928. The set contains the following; 1134 black die-cast 4-4-2 steam loco with brass and copper trim and an elevated headlight, no. 40 die-cast The Ives Railway Lines tender with brass trim and journals, 192C yellow Circus equipment car with a red roof and ends, 193C yellow Circus Animal Car with red roof and ends, three 196C yellow flatcars, one with two original red tent wagons and two flatcars with two original white and red animal wagons each and a 185 red Parlor Car with a Lionel body. The cars have brass journals. The 192C equipment car and 193C animal car are very scarce and only a couple of these cars are known to exist. Included with the set is a selection of Celluloid animals made by Viscaloid which were purchased by Ives. The loco and tender are C6-7. The cars are C5-6.



2378

Ives prewar wide gauge 191 reddish-brown coke car with black platform ends and is gold rubber-stamped Penna. R.R. 191 on each end in OB. The car is the version with no journals. The car is C7. The OB has a repair on the lid.



2379

Ives prewar wide gauge no. 194 dark olive green coal car white rubber-stamped Penna. Coal and Coke Co. with black trim in an OB. The car is the version with no journals. The car is C7-8. The box has a split on the lid.



2382

Ives prewar O gauge no. 330 single semaphore with dark green cast iron base and ladder, white pole, single section of straight track and instruction sheet in OB. The semaphore is C7. The box has two split corners.



2380

Ives prewar wide gauge rare promotional red Southern Pacific Lines passenger set no. 691R, circa 1927 in set box marked 690 with original cardboard inserts. The set contains the following; 3236R electric loco with brass Southern Pacific Lines plates, brass trim and plates and gold painted windows, 184 Club car and an 186 observation car. The cars have brass plates and journals with SOUTHERN PACIFIC LINE brass plates above the windows. The set is C7. The set box has no split corners.



2383

Ives prewar wide gauge early 113 lithographed passenger station with lithographed red brick walls, cast iron window frames, door frames and chimney top, red painted roof and cream and red octagonal pattern on the base floor. The station is lettered TICKET OFFICE on one side and TELEGRAPH OFFICE on the other side. The station is C6.



2381

Ives prewar wide gauge 226 station using a Lionel no. 126 station body. The station has light green base, dark yellow walls, maroon roof, red doors and windows and brass plates. The station is C5.



2384

Ives prewar wide gauge freight set no. 710, circa 1921-26 in set box with original cardboard dividers. The set contains the following; 1132 black cast iron 0-4-0 steam loco with nickel trim and red window trim, no. 40 Ives N.Y.C. and H.R. tender, 191 brown gold rubber-stamped Penna, R.R. coke car with black and white details, 192 orange Santa Fe ventilator and refrigerator car, a 195 red caboose with brown roof, rheostat, track clips, eight curve track sections and four straight track sections. The tender and cars are the versions with no journals. The loco and tender are C7-8. The cars are C7. The set box has some damage to the front corners and label is fully intact.



2385

Ives prewar wide gauge prototype no. 196 dark green flatcar silver rubber-stamped 196 THE IVES RAILWAY LINES on both sides. The flatcar has unusual black trucks with red trim. This car was obtained from the Louis Hertz collection. The car is C5.



2386

Ives prewar wide gauge no. 196 dark green silver rubber-stamped flatcar. The car is the version with no journals, C7-8.



2387

Ives prewar wide gauge no. 190 orange black rubber-stamped Texas Oil tank car with black dome. The car is the version with no journals, C7-8.



2388

Ives prewar wide gauge no. 190 orange-brown silver rubber-stamped Texas Oil tank car with black dome and modified one gauge high style trucks. The car is the version with no journals. The tank is C7.



2389

Ives prewar wide gauge no. 193 brown gold rubber-stamped Live Stock car with black and white details. The car is the version with no journals. The car is C7.



2390

Ives prewar wide gauge scarce and desirable The Olympian passenger set no. 1078R, circa 1930. The set contains a 3245R black 4-4-4 electric loco with orange frame, brass plates and trim, 247 Club car, 248 Pullman car and a 249 observation car. The passenger cars are orange with Lionel bodies with Ives trucks, black roofs, decals and brass journals. The aluminum casting on the loco frame and side trucks are solid and intact. The loco is C6 and the cars are C5.



2391

Ives prewar wide gauge 196 orange rubber-stamped flatcar with brass journals, circa 1929, C6.



2392

Ives prewar wide gauge 197 light green rubber-stamped lumber car with wood load, black stakes and brass journals, C6-7.



2393

Ives prewar wide gauge no. 191 blue green rubber-stamped Penna. R.R. coke car with brass journals, circa 1929-30. The car is C6-7.



2394

Ives prewar wide gauge no. 193 green rubber-stamped Live Stock car with black and white details and brass journals, circa 1926-27 in OB, C6. The box is complete. The box lid has one split corner.



2398

Ives prewar wide gauge 331 target signal with maroon cast iron base, black pole, light shield and finial, C7.



2395

Ives prewar wide gauge no. 194 black silver rubber-stamped Penna. Coal and Coke car with red details and brass journals, circa 1928. The car is missing one coupler and is C6-7.



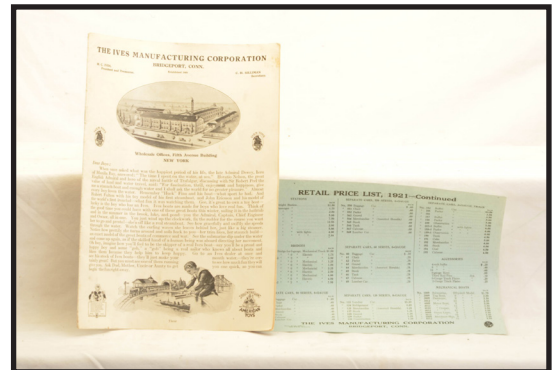
2399

Ives prewar wide gauge no. 307 dark green double street light in OB, C7. The OB is complete with original cardboard insert. The lid has two split corners.



2396

Ives prewar wide gauge 3245R black 4-4-4 electric loco with short cab and sheet metal frame, circa 1928. The engine has brass trim. The loco has been rewheeled and cab has been repainted.



2400

Ives prewar original The Ives Manufacturing Corporation Bridgeport, Conn. catalog, circa 1921. The catalog is black and white with a color centerfold. Also included is an original Retail Price List from 1921. The catalog is complete and in like new condition.



2397

Ives prewar wide gauge Cadet blue passenger cars with brass trim and journals and brass Pullman plates above the windows, circa 1928 including; 187 Club car, 188 Pullman and a 189 observation car. The cars are C6.

STOUT AUCTIONS

Toy & Train Specialists



The Jerry Poch
Train Collection

Stout Auctions
2884 Mercer-West Middlesex Rd
West Middlesex, PA 16159
(724) 528-1500
katy@stoutauctions.com